

Queens Road, N11

£650,000

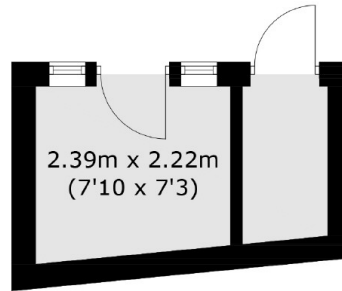
This two bedroom cottage style house is filled with period charm and open planned to the rear of the house combining the kitchen and dining room areas to create a family hub area. That leads out onto the rear garden that accommodates a home office. This family home is offered chain free and ready to move into.

Located a stone's throw away from Bowes Park British rail station and Bounds Green tube station offering phenomenal links to the City and West End. Schools and local amenities including supermarkets, restaurants, pubs and cafes are all within a short distance.

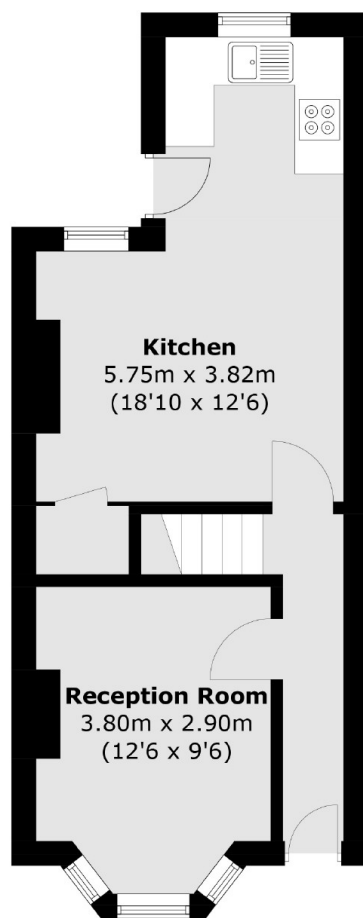
Features

- Two Bedrooms
- Cottage Style House
- Open Plan Living
- Period Features
- Chain Free
- Great Transport Links

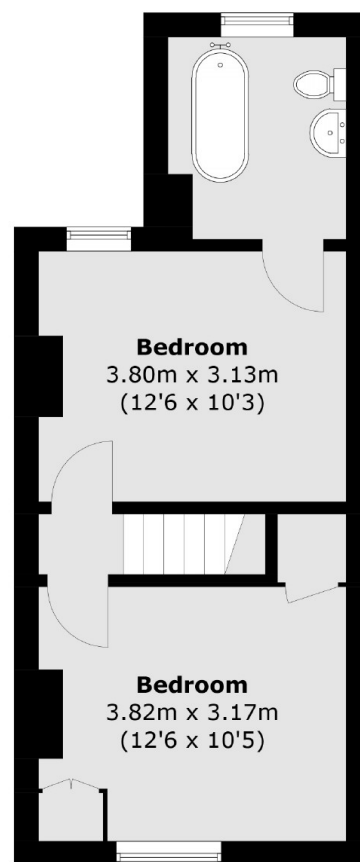
Queens Road, London, N11



(Not Shown In Actual
Location / Orientation)



Ground Floor



First Floor

Total area (approx.): 68.4 sq. m (736.3 sq. ft)
Outhouse : 7.5 sq. m (80.7 sq. ft)