



Church Crescent, N10

£450,000

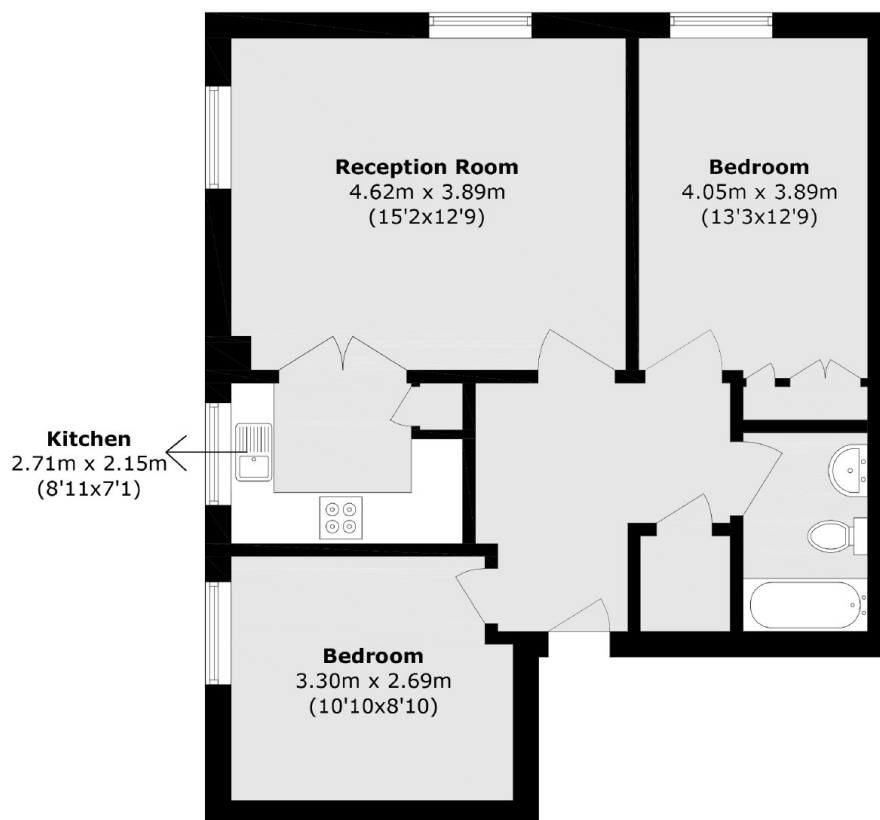
Situated in the heart of Muswell Hill, is this sought after over 60s block benefiting from stunning views, lift access and a well kept communal gardens. The flat offers two double bedrooms with double glazed windows, plenty of hallway space and a separate kitchen/reception room.

Located a moments walk from the Muswell Hill Broadway, this property has variety of access to transport links such as bus routes and under a mile away from Highgate Underground Station.

Features

- Lift Access
- Communal Gardens
- Two Bedrooms
- Chain Free
- Off street Parking
- Top Floor

Church Crescent, London, N10



Total area (approx): 153.38 sqm (1652.5 sq ft)

Dexters

Muswell Hill
418 Muswell Hill Broadway
London
N10 1DJ
Sales
020 8444 2388

Energy Rating: C. We aim to make our particulars both accurate and reliable. However they are not guaranteed; nor do they form part of an offer or contract. If you require clarification on any points then please contact us, especially if you're traveling some distance to view. Please note that appliances and heating systems have not been tested and therefore no warranties can be given as to their good working order.

 **RICS** | Regulated
Estate Agent
and Letting Agent

[dexters.co.uk](https://www.dexters.co.uk)