



Hillfield Park, N10

£1,000,000

Situated on the first floor is this well presented, three bedroom maisonette benefiting from your own entrance with a terrace and well maintained private garden. This property also has a spacious open plan kitchen/living area with ample amount of built in storage throughout the flat.

Located in the heart of Muswell Hill with its vast array of boutique shops, restaurants and excellent bus services providing easy access to Highgate tube station (Northern Line), also nearby are Highgate and Queens Woods. Within catchment of Muswell Hill Primary and Fortismere Secondary schools.

Features

- Share Of Freehold
- Own Entrance
- Private Garden
- Private Terrace
- Three Bedrooms
- High Ceilings



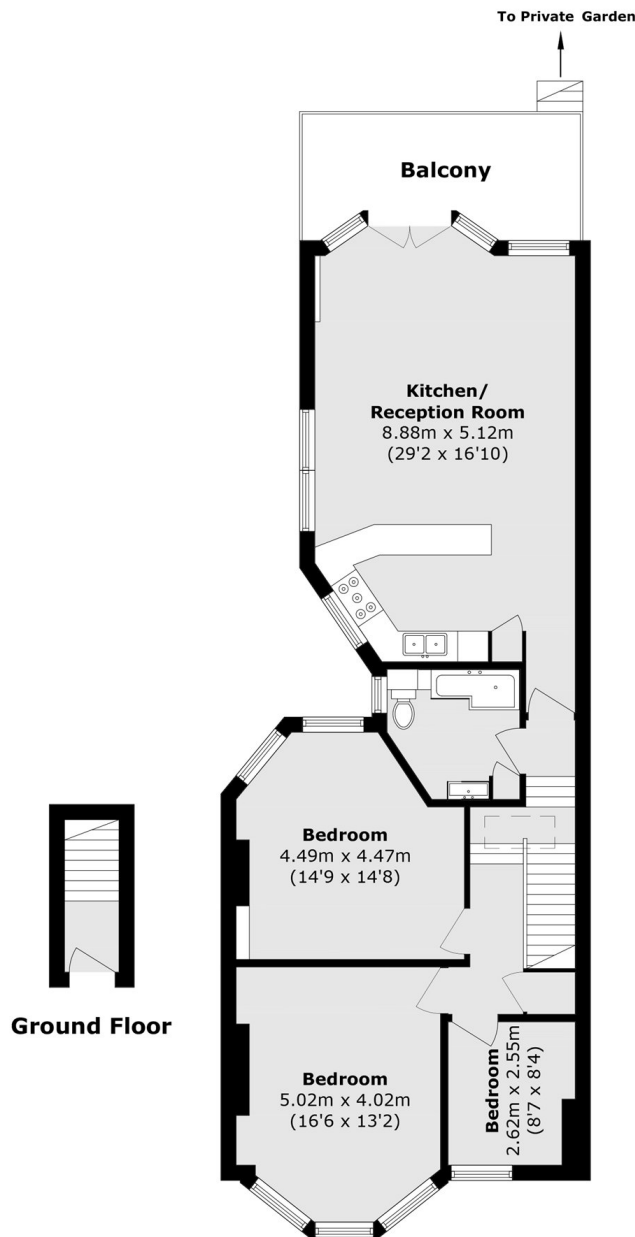
Hillfield Park, N10

This charming maisonette benefits from its own private entrance and offers the character and atmosphere of an Edwardian house. From the hallway, you are welcomed into a well-appointed kitchen/reception room, which provides direct access to a private terrace with steps leading down to the garden.

The hallway features high ceilings and original period details, leading through to three generously sized bedrooms and a spacious family bathroom. There is also potential to extend into the loft, creating an additional bedroom with an en-suite, further enhancing the already substantial accommodation this maisonette provides.



Hillfield Park, London, N10



Total area (approx.): 109.6 sq. m (1179.7 sq. ft)
Balcony area (approx.): 12.5 sq. m (134.5 sq. ft)

Dexters

Muswell Hill
418 Muswell Hill Broadway
London
N10 1DJ
Sales
020 8444 2388

Energy Rating: C. We aim to make our particulars both accurate and reliable. However they are not guaranteed; nor do they form part of an offer or contract. If you require clarification on any points then please contact us, especially if you're traveling some distance to view. Please note that appliances and heating systems have not been tested and therefore no warranties can be given as to their good working order.

 **RICS** | Regulated
Estate Agent
and Letting Agent

[dexters.co.uk](https://www.dexters.co.uk)