



Coppetts Road, N10

£385,000

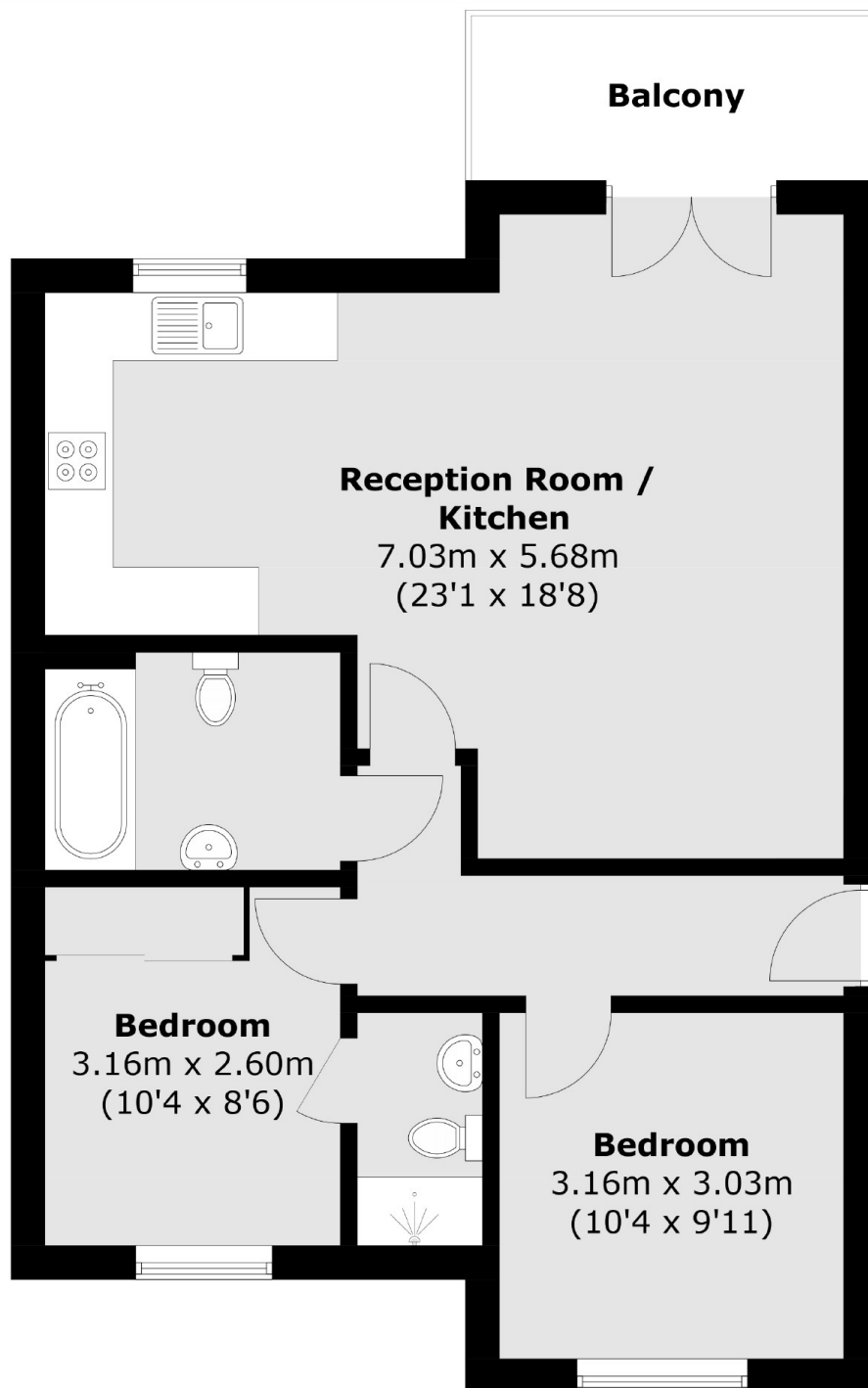
Situated in a modern development is this two double bedroom top floor flat with sole access to a loft space. This generously proportioned property offers a separate kitchen, guest bathroom, en-suite and a spacious reception room with direct access onto a private balcony along with allocated off road parking space.

Gilson Place is situated within easy reach of shops and amenities in Muswell Hill with excellent green spaces including Alexandra Park close by. The development is within catchment areas for outstanding schools.

Features

- Two Bedrooms
- Top Floor
- Private Balcony
- Allocated Parking
- Modern Development
- Chain Free

Coppetts Road,
London, N10



Total area (approx.): 64.5 sq. m (694.3 sq. ft)
Balcony: 5.1 sq. m (54.9 sq. ft)

Dexters

Muswell Hill
418 Muswell Hill Broadway
London
N10 1DJ
Sales
020 8444 2388

Energy Rating: C. We aim to make our particulars both accurate and reliable. However they are not guaranteed; nor do they form part of an offer or contract. If you require clarification on any points then please contact us, especially if you're traveling some distance to view. Please note that appliances and heating systems have not been tested and therefore no warranties can be given as to their good working order.

 **RICS** | Regulated
Estate Agent
and Letting Agent

[dexters.co.uk](https://www.dexters.co.uk)