



Colney Hatch Lane, N10

£1,750 Per calendar month

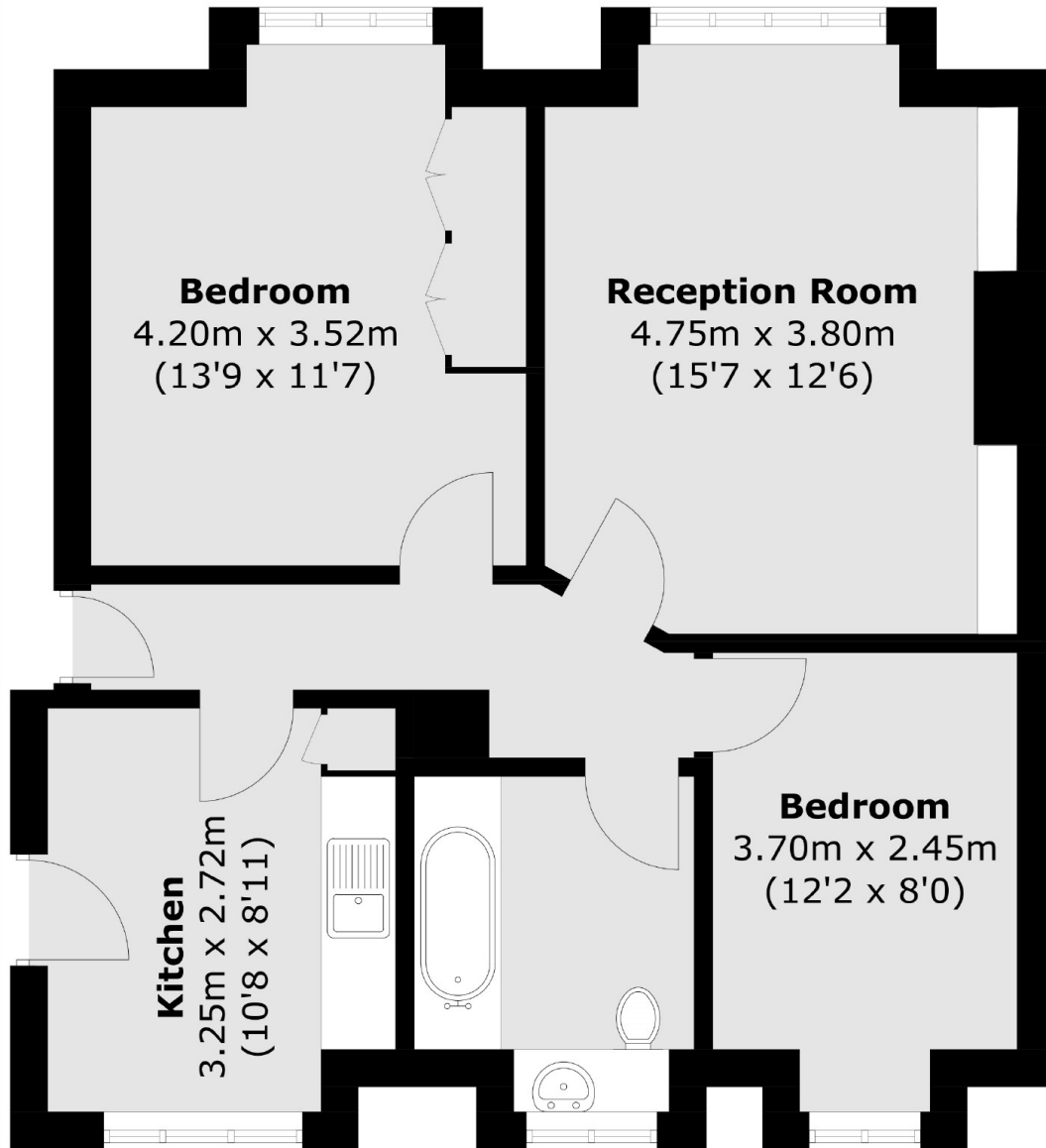
A newly painted two bedroom flat set in a popular block within a short walking distance of Muswell Hill Broadway. The property benefits from a good living room, two double bedrooms, separate kitchen and bathroom.

Located in a charming period building, Muswell Hill Broadway is just a short walk away offering a vast array of restaurants and good links into central London.

Features

Two Double Bedrooms
Third Floor
Separate Kitchen
Spacious Living Room
Access to Communal Gardens
Muswell Hill

Colney Hatch Lane,
London, N10



Total area (approx.): 61.9 sq. m (666.3 sq. ft)