

Boyton Road, N8

£2,000 Per calendar month

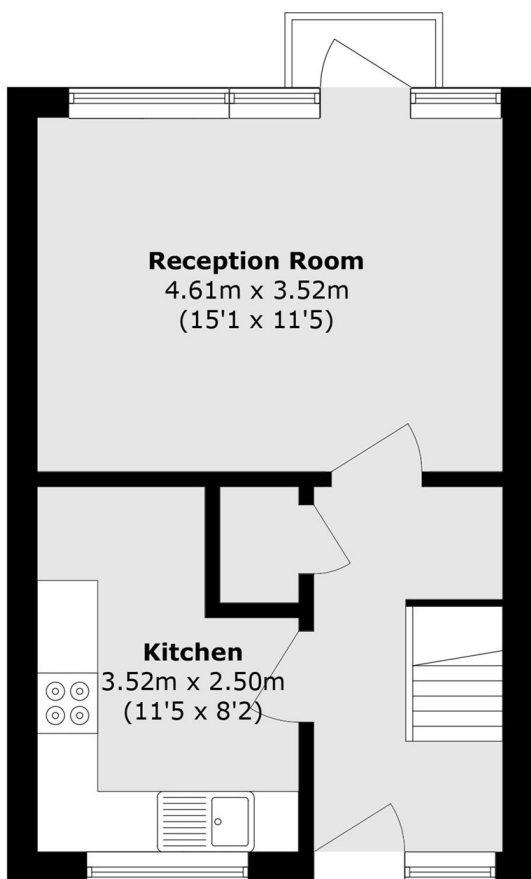
A newly refurbished split-level two-bedroom home, finished to an exceptional modern standard and available immediately. This bright and spacious property offers two generous double bedrooms, a sleek contemporary bathroom, and well-designed living space arranged over split levels, creating a real sense of character and separation rarely found in similar homes.

The area is well served by highly regarded local schools, including Campsbourne Infant & Junior Schools and Greig City Academy, and offers a fantastic range of local amenities, green spaces, cafés, and restaurants. An ideal home for professionals, couples, or small families seeking a stylish, move-in-ready property in a prime North London location.

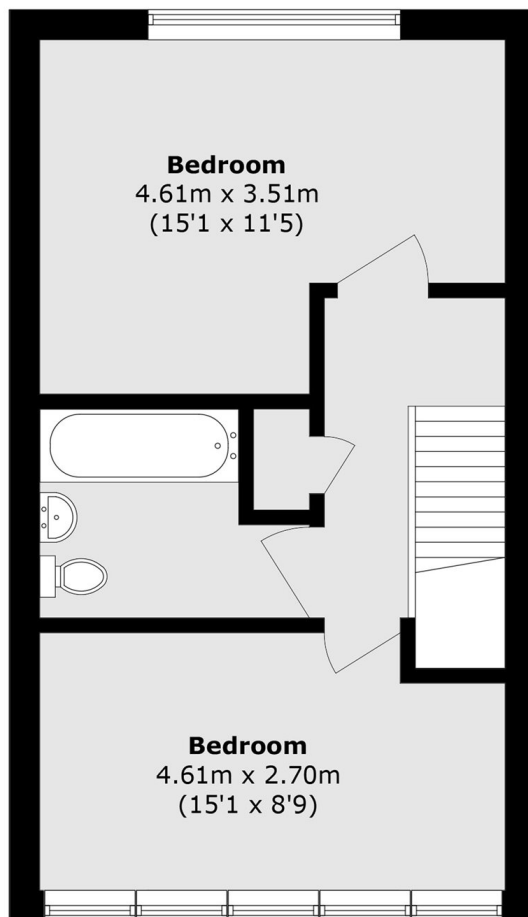
Features

- Two Bedrooms
- Split Level Property
- Wood Floors
- Brand New Bathroom & Kitchen
- Spacious Reception Room
- Residential Street

Boyton Road,
London, N8



Ground Floor



First Floor

Total area (approx.): 72.5 sq. m (780.4 sq. ft)