



Dartmouth Park Hill, NW5

£700,000

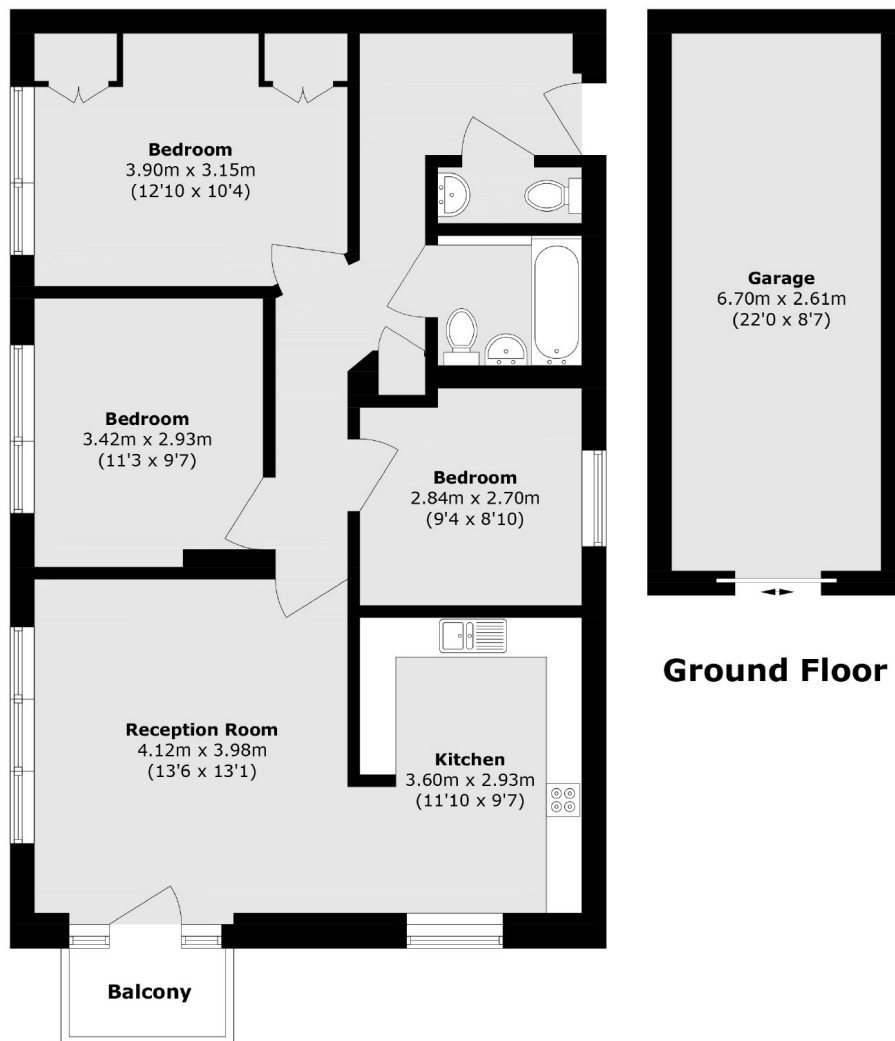
Located in the heart of Dartmouth Park, this three double bedroom apartment is situated on the ground floor and offers an east facing balcony, access to a communal garden, share of freehold, and a private garage.

Dartmouth Park Hill is located close to Hampstead Heath, with over 700 acres of green open space and the shops and restaurants along both Fortress Road and Highgate High Street.

Features

- Three Double Bedrooms
- Ground Floor
- Share Of Freehold
- Garage
- East Facing Balcony
- Communal Gardens

Dartmouth Park Hill, London, NW5



Raised Ground Floor

Total area (approx.): 75.7 sq. m (814.8 sq. ft)

Balcony area (approx.): 2.1 sq. m (22.6 sq. ft)

Garage area (approx.): 17.4 sq. m (187.2 sq. ft)