

Lady Somerset Road
Kentish Town, NW5

Dexters



Lady Somerset Road
Kentish Town



About the property

A extended Victorian home that blends period character with modern sophistication. This home is impeccably finished throughout, featuring bespoke interiors, smart technology, and elegant design. The open plan ground floor is filled with natural light from the skylights above, featuring a beautifully crafted kitchen with porcelain worktops and Gaggenau appliances. It is complemented by original marble fireplaces and smoked and oiled French oak flooring with underfloor heating throughout.

Upstairs, you will find two generously sized double bedrooms and a luxurious bathroom. Ascending to the

second floor, there are two additional spacious rooms, accompanied by another bathroom. On the top floor, stunning full-width sliding Sky-Frame windows offer breathtaking views over the garden.

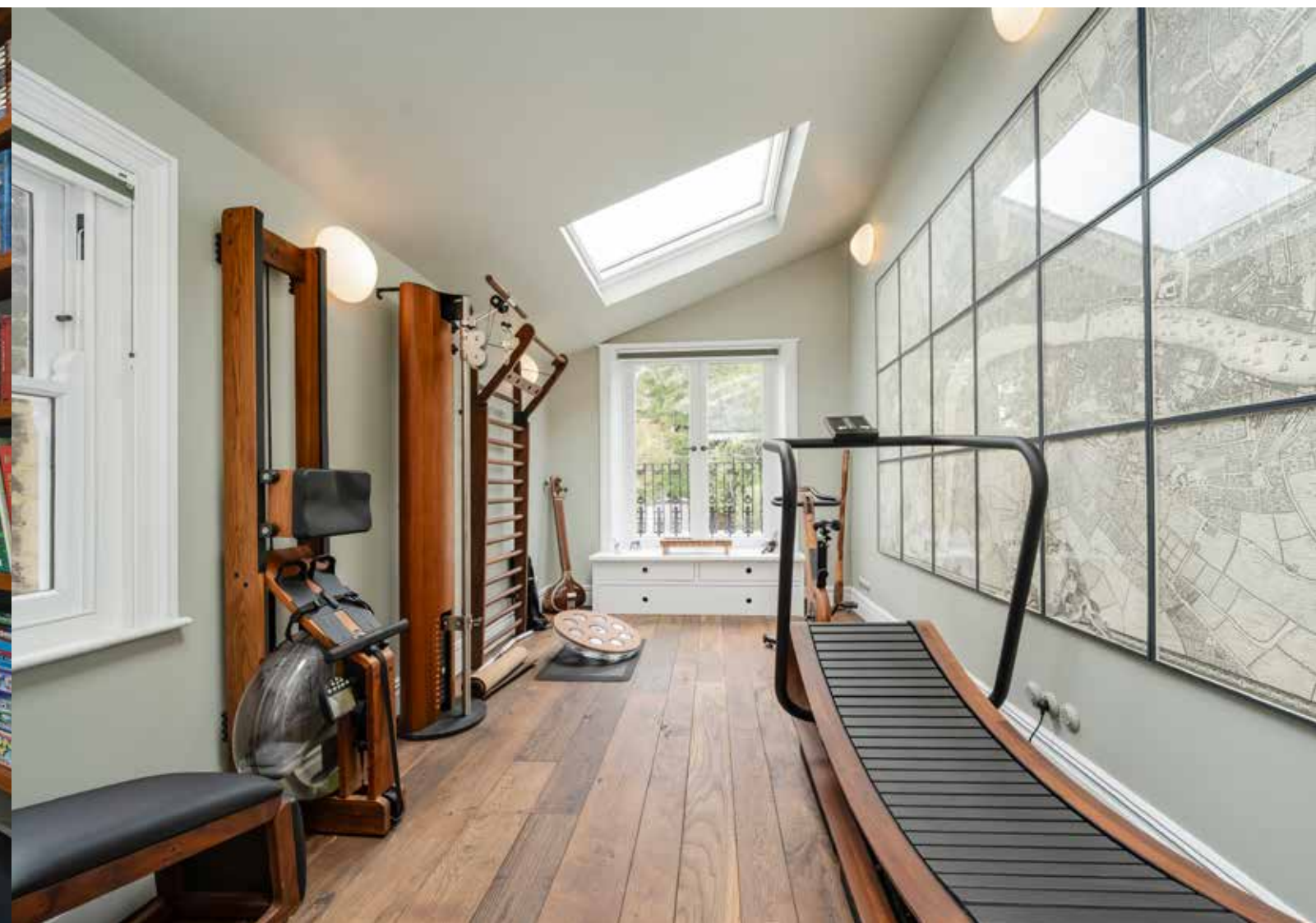
The landscaped rear garden, planted with mature trees and soft fruit, provides a peaceful private sanctuary.

Located on Lady Somerset Road, the home is close to excellent transport links, top-rated schools, and Hampstead Heath, creating an ideal family-friendly environment.

Key features

- Five Bedrooms
- Modern Kitchen Extension
- Charming Period Details
- Wonderful Garden
- Spacious Living Area
- Semi-Detached







TOTAL APPROX. FLOOR AREA 2,935.2 SQ. FT (272.7 SQ. M)
 LOFT STORAGE 56.0 SQ. FT (5.2 SQ. M)
 BALCONY AREA 50.5 SQ. FT (4.7 SQ. M)

Energy Rating: D. We aim to make our particulars both accurate and reliable. However they are not guaranteed; nor do they form part of an offer or contract. If you require clarification on any points then please contact us, especially if you're traveling some distance to view. Please note that appliances and heating systems have not been tested and therefore no warranties can be given as to their good working order.



Dexters Dartmouth Park & Tufnell Park
64 Chetwynd Road,
London, NW5 1DE
020 7284 0101

Dexters

Dexters