



Hornsey Road, N7

£350,000

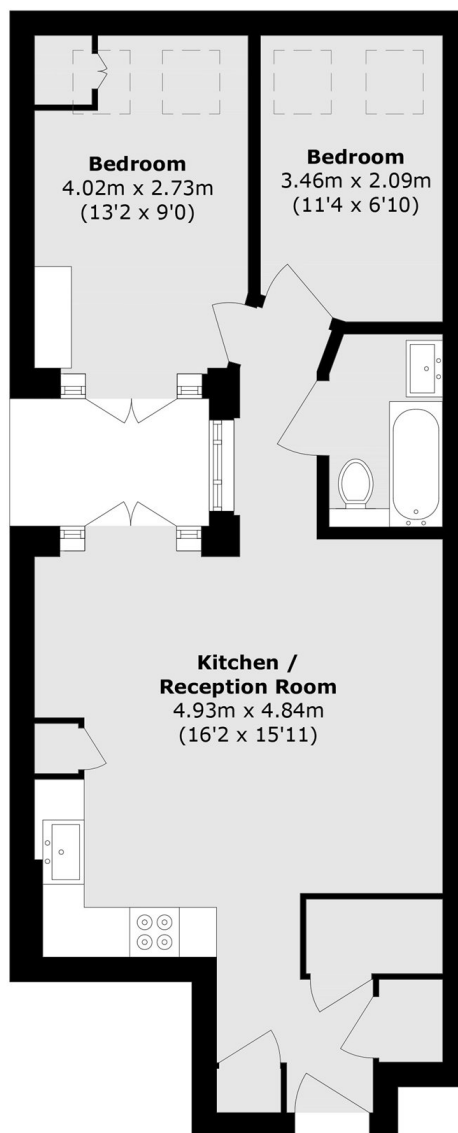
A charming two double bedroom ground floor flat with an open plan reception room/kitchen, and a patio which can be accessed from both the bedroom and reception room. This flat is perfect for a first time buyer.

This property is close to Archway tube station (Northern line), Finsbury Park station (Victoria line) and Upper Holloway Overground, along with a variety of shops and restaurants.

Features

- Two Bedrooms
- Open Plan Reception/Kitchen
- Leasehold
- Close to Local Shops
- Great Transport Links
- Patio

Hornsey Road, London, N7



Total area (approx.): 54.1 sq. m (582.3 sq. ft)