

Chetwynd Road, NW5

£500,000

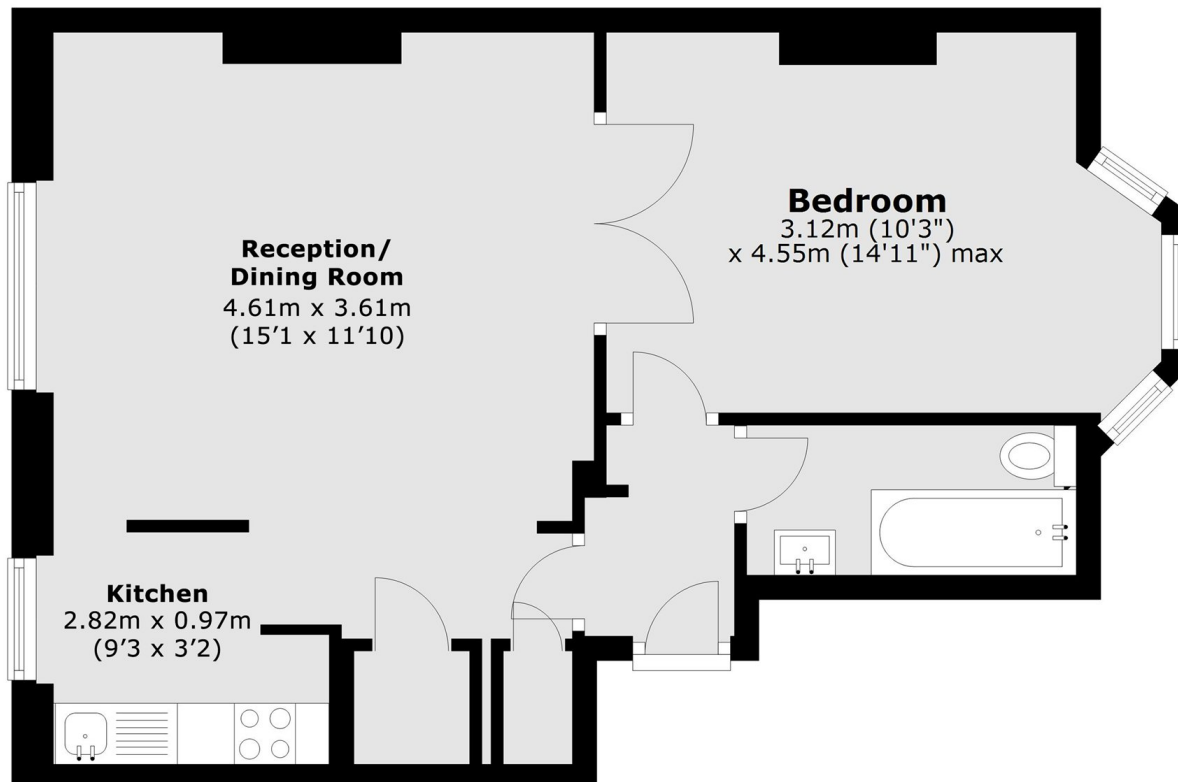
A fully renovated raised ground floor Victorian conversion in the heart of Dartmouth Park. This property has a large reception room with high ceilings, a modern kitchen, a generous bedroom and a designer bathroom.

This property is on the doorstep of the beautiful settings of Hampstead Heath and close to the boutique shops on Swains Lane. There are excellent transport links nearby, such as Tufnell Park tube and Gospel Oak Overground.

Features

- Share of Freehold
- Close to the Heath
- One Bedroom
- Open Plan Living
- Victorian Conversion
- Raised Ground Floor

Chetwynd Road, London, NW5



Upper Ground Floor

Total area: approx. 46.6 sq. metres (501.5 sq. feet)