



## Dartmouth Park Hill, NW5

### £600,000

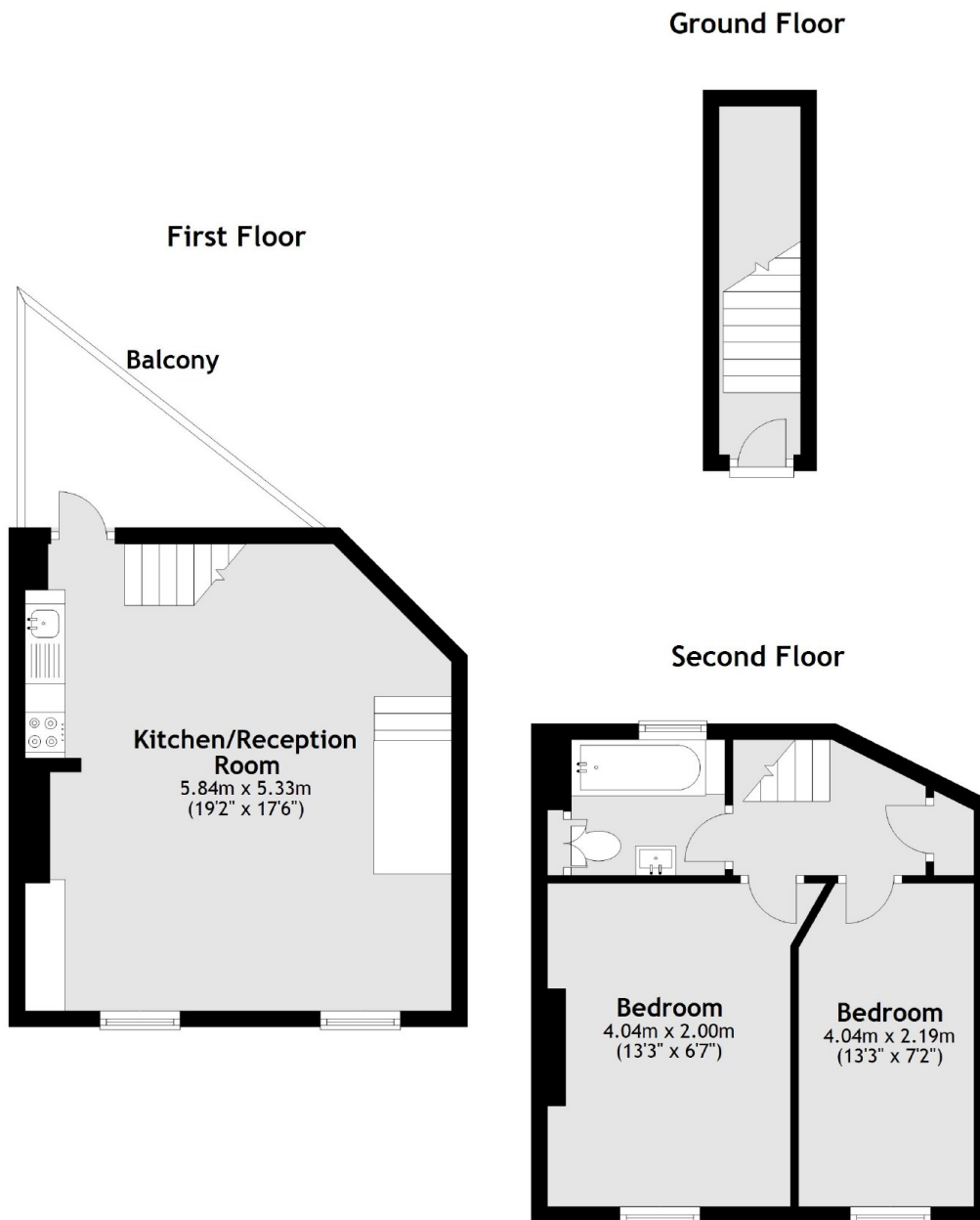
A well-presented two bedroom upper maisonette with an expansive open plan reception room/kitchen, a private balcony, and wooden floors throughout. The property also benefits from loft space.

Dartmouth Park Hill is within walking distance of Tufnell Park station (Northern line) and the green open spaces of Hampstead Heath and Waterlow Park, with the local shopping facilities of Fortress Road also close at hand.

### Features

- Reception Room
- Kitchen Area
- Two Bedrooms
- Bathroom
- Private Balcony
- Private Entrance

# Dartmouth Park Hill, London, NW5



Total area: approx. 64.8 sq. metres (697.2 sq. feet)

## Dexters

Dartmouth Park & Tufnell Park  
64 Chetwynd Road  
Dartmouth Park  
London  
Sales  
020 7284 0101

Energy Rating: D. We aim to make our particulars both accurate and reliable. However they are not guaranteed; nor do they form part of an offer or contract. If you require clarification on any points then please contact us, especially if you're traveling some distance to view. Please note that appliances and heating systems have not been tested and therefore no warranties can be given as to their good working order.

 **RICS** | Regulated  
Estate Agent  
and Letting Agent

[dexters.co.uk](https://www.dexters.co.uk)