



Junction Road, N19

£425,000

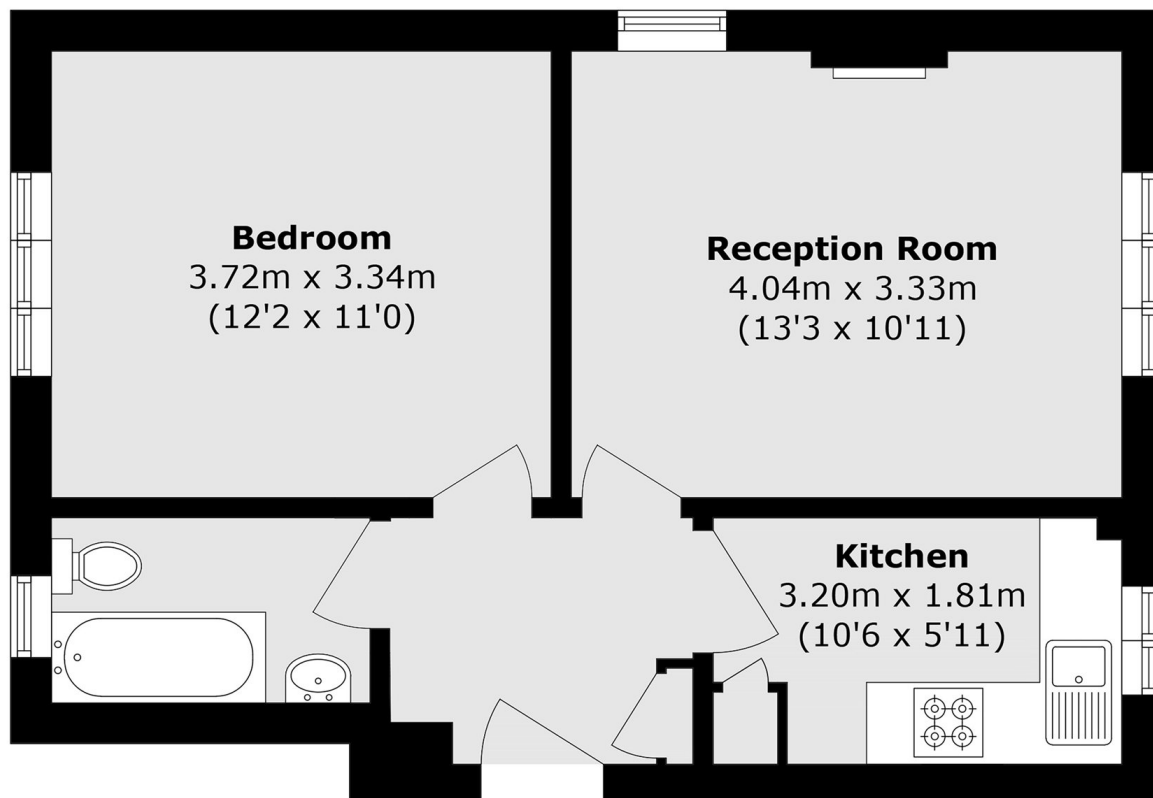
Set within a well-located purpose built block in the heart of Tufnell Park, this one bedroom apartment offers an excellent opportunity for buyers looking to add value. The property also includes a private garage.

Junction Road is ideally located for Tufnell Park station (Northern line), Archway station (Northern line) and the local independent boutiques on both Junction Road and Fortress Road.

Features

- Private Garage
- One Bedroom
- Ground Floor
- Refurbishment Required
- Long Lease
- Purpose Built

Junction Road, London, N19



Total area (approx.): 40.0 sq. m (430.6 sq. ft)