



## Junction Road, N19

### £325,000

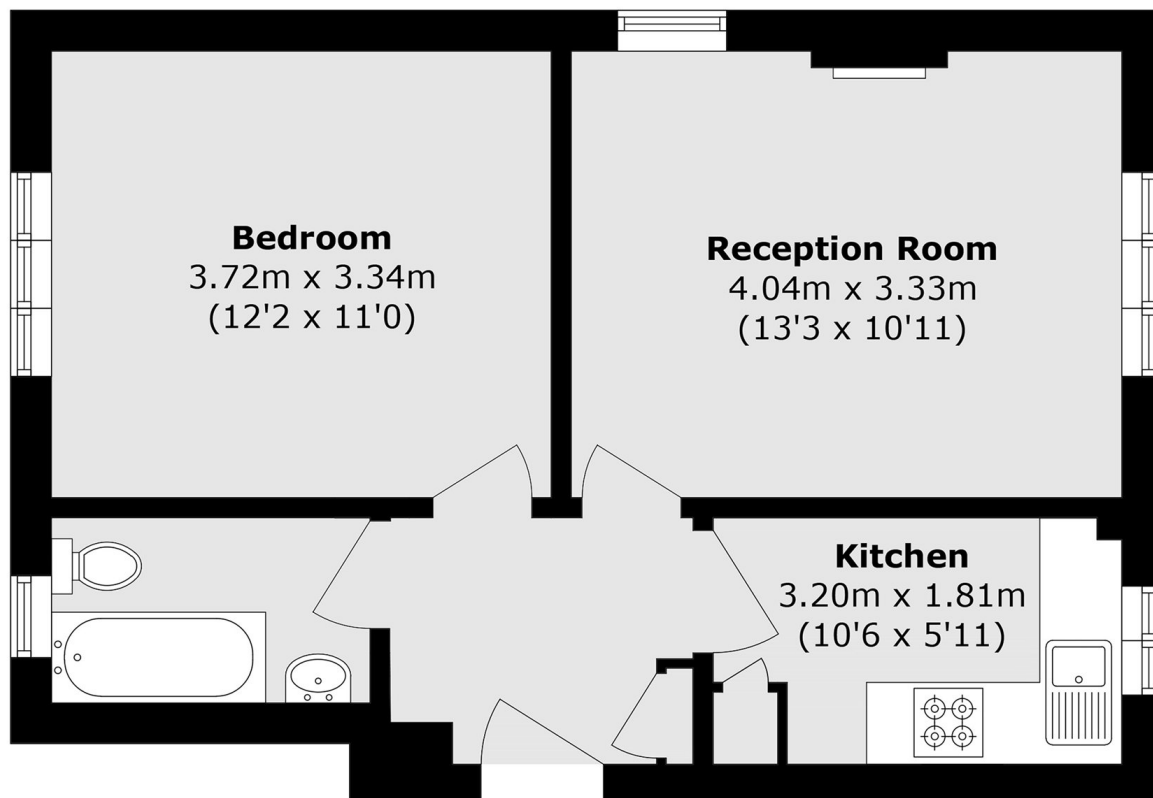
Set within a purpose built block in Tufnell Park, this one bedroom apartment offers an excellent opportunity for buyers looking to add value, and benefits from off-street parking, available on a first-come, first-served basis.

Junction Road is ideally located for Tufnell Park station (Northern line), Archway station (Northern line) and the local independent boutiques on both Junction Road and Fortress Road.

### Features

- One Bedroom
- Ground Floor
- Refurbishment Required
- Long Lease
- Garage Available
- Local Amenities Nearby

# Junction Road, London, N19



Total area (approx.): 40.0 sq. m (430.6 sq. ft)