



Goddard Place, N19

£450,000

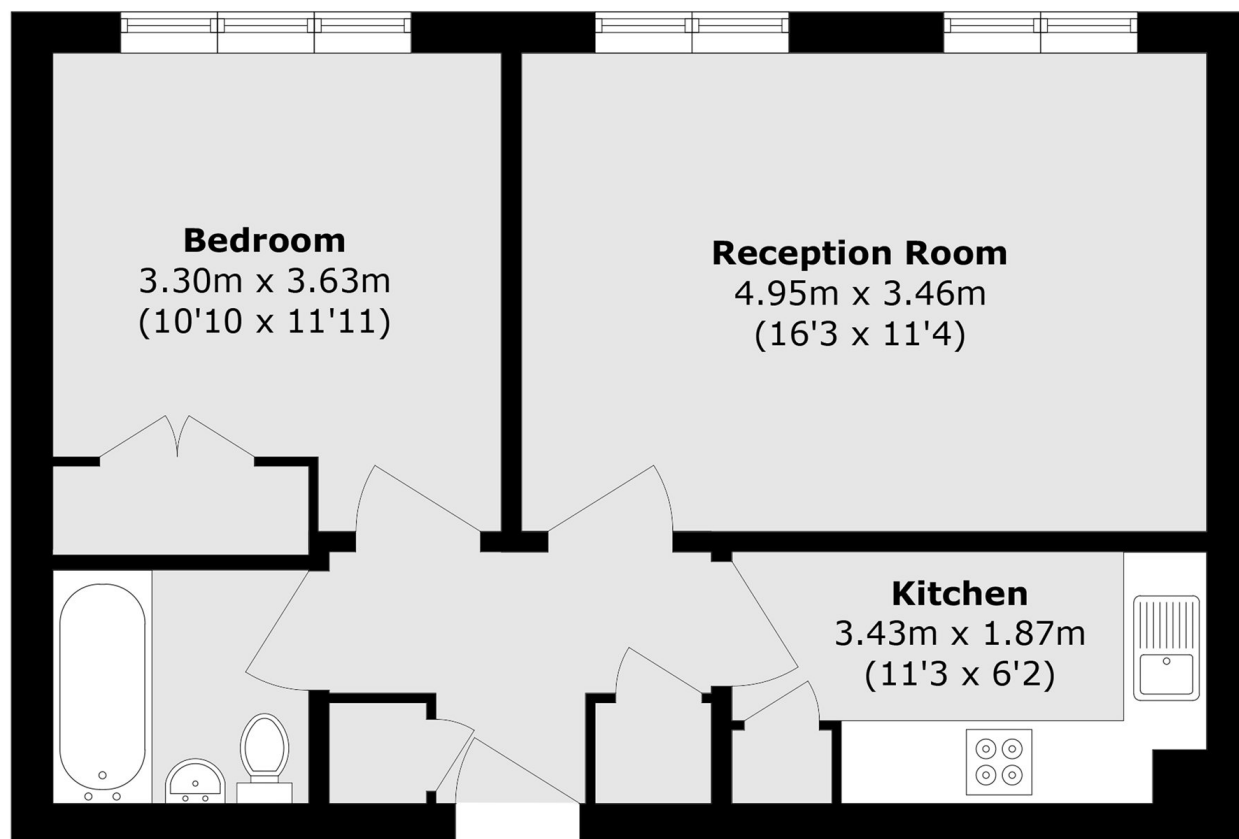
A lovely one double bedroom flat situated within a gated development in Tufnell Park. The property offers a spacious reception room, a fully fitted kitchen, a family bathroom and ample storage throughout.

Goddard Place is well-located on the borders of Dartmouth Park and Tufnell Park for the local boutiques, trendy pubs and restaurants on Fortress Road, and just moments from Tufnell Park station.

Features

- Chain Free
- Private Parking
- Second Floor Flat
- Separate Reception
- One Double Bedroom
- Good Transport Links

Goddard Place, London, N19



Total area (approx.): 45.2 sq. m (486.5 sq. ft)