



## Mowatt Close, N19

£375,000

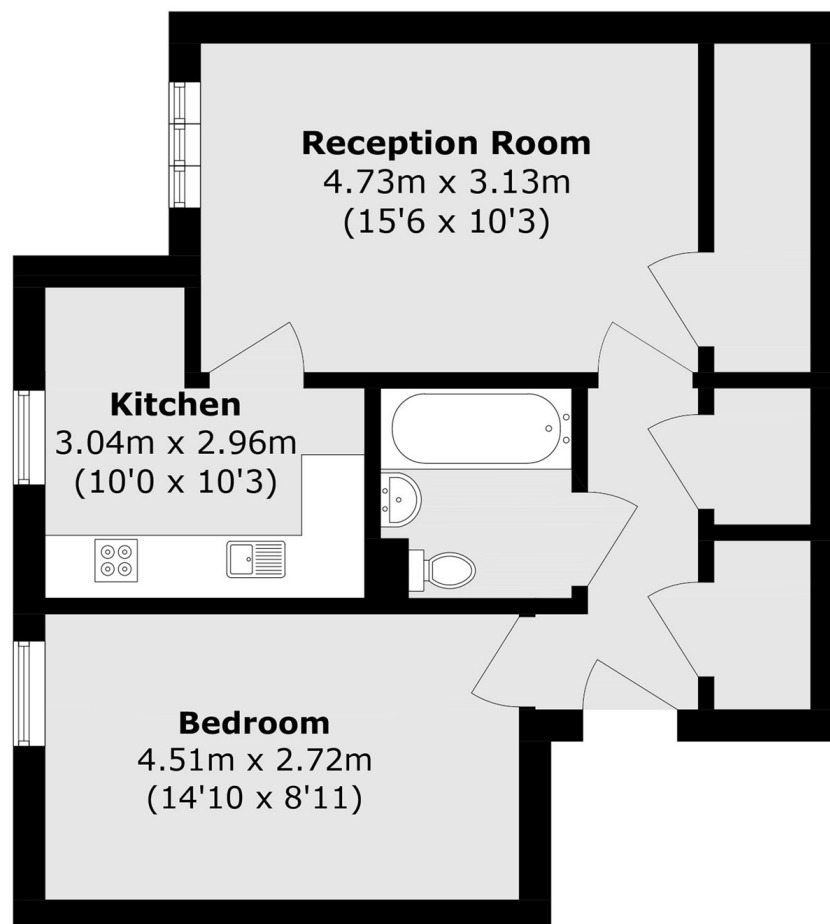
A spacious one double bedroom flat located close to Hornsey Road. The property offers a separate reception room and kitchen, generous storage throughout, and is offered chain free.

Located within half a mile of Upper Holloway station and Archway underground station, Mowatt Close is ideally positioned close to the independent cafés and shops along Holloway Road.

### Features

- Leasehold
- Chain Free
- Ample Storage
- Separate Reception
- One Double Bedroom
- Close to Transport Links

# Mowatt Close, London, N19



Total area (approx.): 50.8 sq. m (546.8 sq. ft)