



Carleton Gardens, N19

£400,000

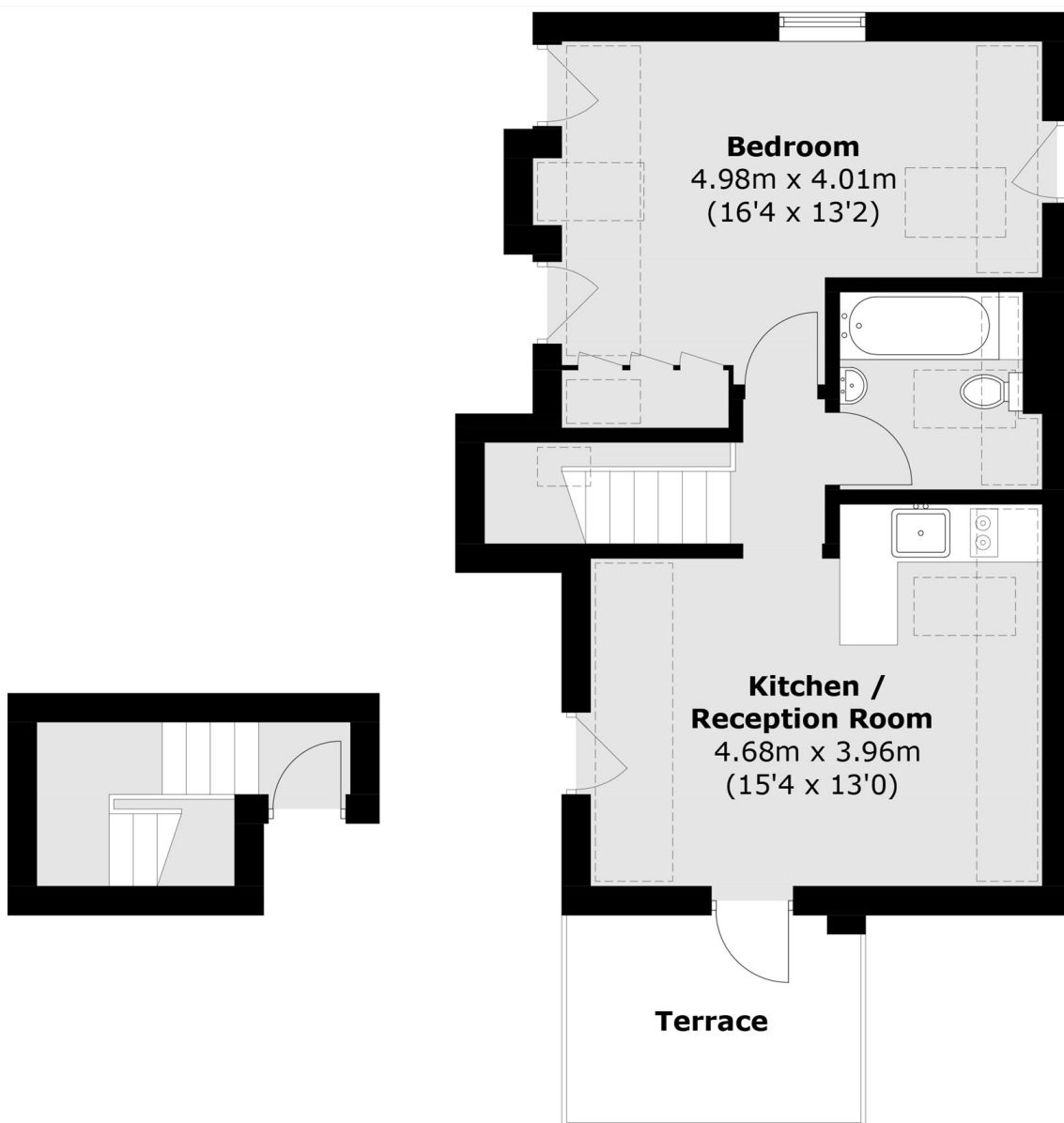
A beautifully presented top floor period conversion, featuring a private south facing terrace, an open plan kitchen and living area, and a spacious double bedroom with fitted wardrobes.

Carleton Gardens is ideally located, offering easy access to the shops, cafés, and restaurants in both Tufnell Park and Kentish Town. Nearby transport links include both Tufnell Park and Kentish Town stations.

Features

- One Bedroom
- Top Floor
- South Facing Roof Terrace
- Chain Free
- Share of Freehold
- Great Transport Links

Carleton Gardens, London, N19



Ground Floor

First Floor

Total area (approx.): 46.96 sq. m (505.47 sq. ft)
Terrace: 6.5 sq. m (70.0 sq. ft)