



Hillmarton Road, N7

£625,000

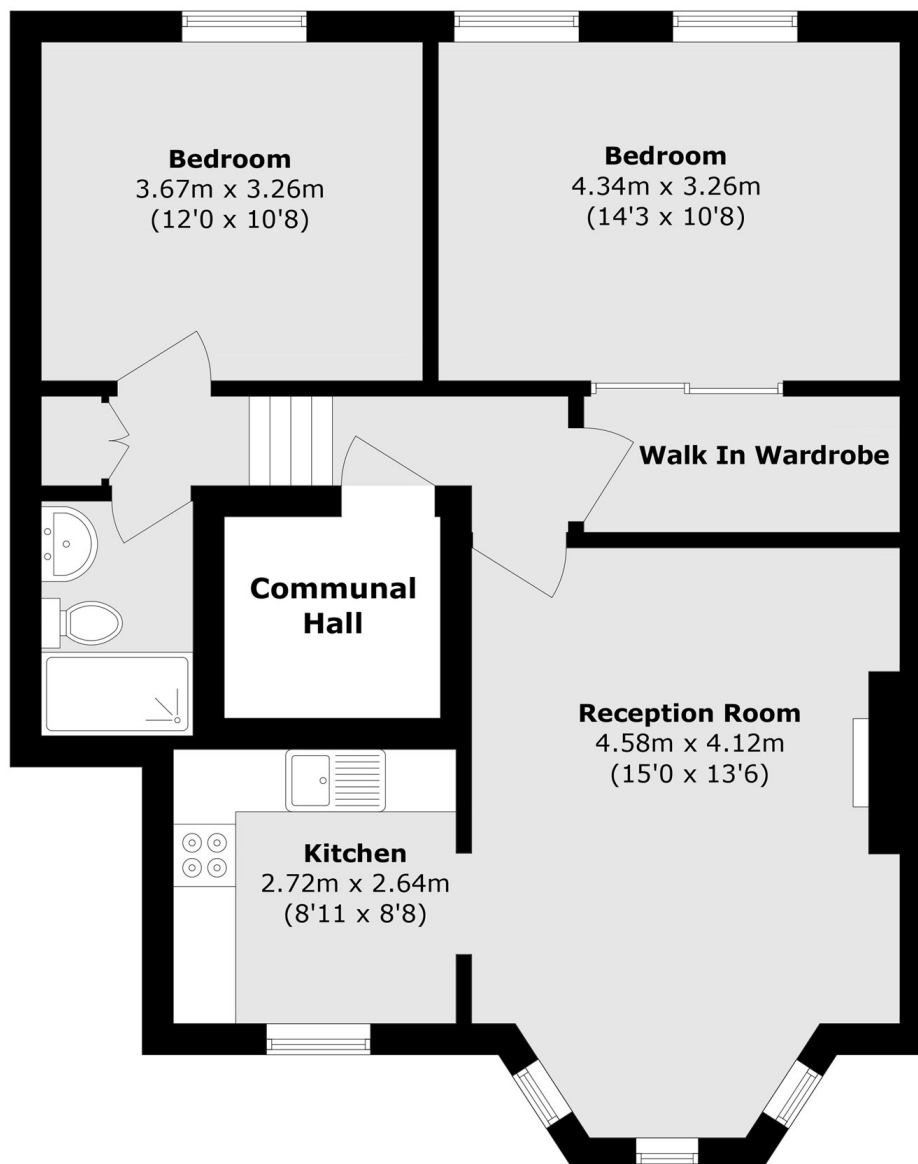
A well-presented two bedroom flat within a Victorian conversion. The flat benefits from a generous bay-fronted reception room allowing lots of natural light into the property, a separate kitchen and good storage.

Perfectly placed for easy access to Kings Cross along Caledonian Road. Holloway Road and Caledonian Road stations are both nearby, as are all of the restaurants, shops and bars on Holloway Road.

Features

- Victorian Conversion
- Two Double Bedrooms
- Superb Transport Links
- Spacious Reception Room
- Share of Freehold
- Period Features

Hillmarton Road, London, N7



Total area (approx.): 76.7 sq. m (825.5 sq. ft)