



## Hatchard Road, N19

### £800,000

A beautifully presented three bedroom flat arranged over two floors. Recently renovated throughout, the property features a stunning separate kitchen and a generously sized south-facing private terrace.

Hatchard Road is a tree-lined road close to many local amenities and restaurants. This property is less than half a mile away from Archway tube, Upper Holloway station and Whittington Park.

### Features

- Top Floor Flat
- Share Of Freehold
- Excellent Condition
- Private Terrace
- Three Bedrooms
- Period Conversion





## Hatchard Road, N19

The property has a large reception room with parquet flooring, underfloor heating, a feature fireplace and large windows that allow lots of natural light into the property.

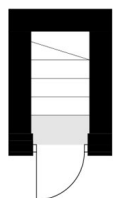
Off the reception room is the separate kitchen, also with underfloor heating, a farmhouse sink and quartz counter tops. There is also a family bathroom on this floor as well as a bedroom, which is currently being used as a study/office space.

On the second floor you'll find two further double bedrooms, both with good storage, and a stunning south-facing private terrace, perfect for entertaining and enjoying the sun.

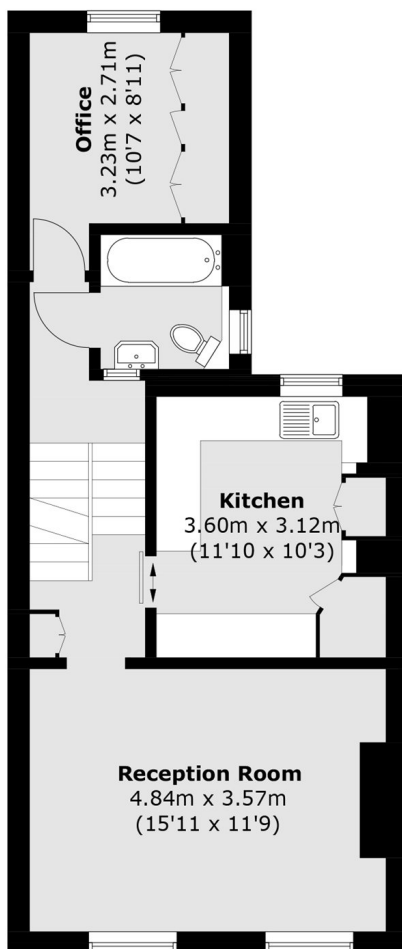




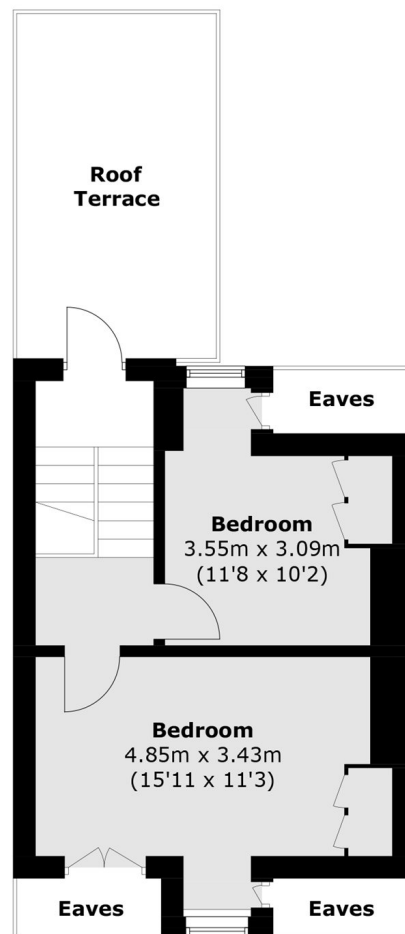
# Hatchard Road, London, N19



**Ground Floor**



**First Floor**



**Second Floor**

Total area (approx.): 80.2 sq. m (863.2 sq. ft)  
(Excluding Eaves)  
Roof Terrace: 12.7 sq. m (136.7 sq. ft)