



Penn Road, N7

£500,000

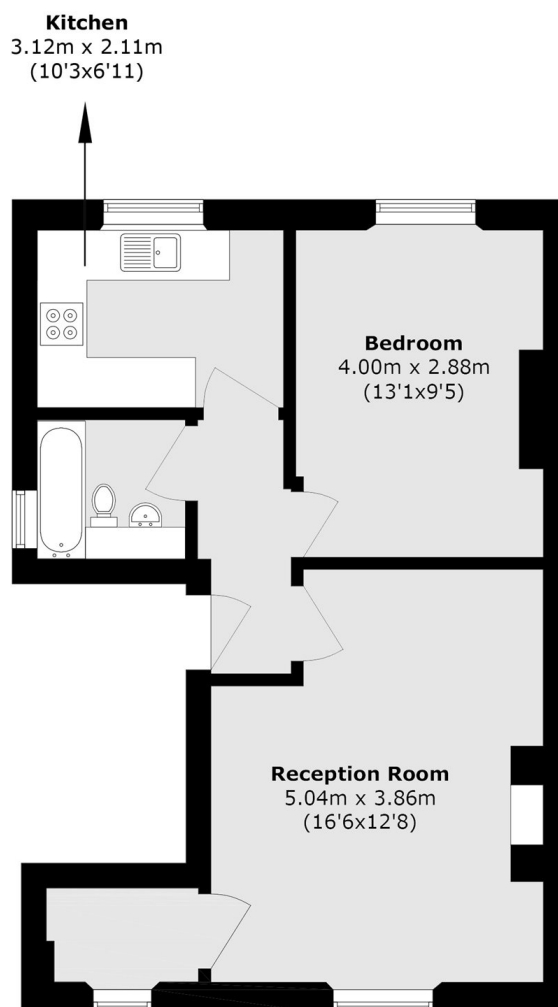
A charming first floor one double bedroom apartment within an attractive Victorian house. This property has a large reception room, high-ceilings, sash windows and access to a private section of the garden.

Penn Road is a one-way tree-lined street within the sought after Hillmarton Conservation Area, and is just half a mile to both Caledonian Road and Holloway Road underground stations (both on the Piccadilly line).

Features

- Large Double Bedroom
- Study Area
- Reception Room
- Separate Kitchen
- Victorian Conversion
- Private Garden

Penn Road, London, N7



Total area (approx.): 47.5 sq. m (511.3 sq. ft)