



## Canfield Gardens, NW6

### £535,000

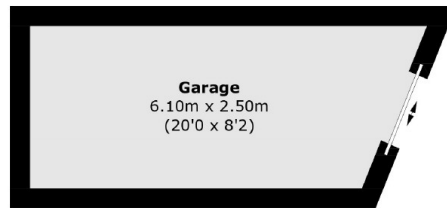
A very rare opportunity to purchase a two bedroom duplex apartment which includes both a private garden and garage. This property offers stylish interiors, generous living space and is a rare find in one of London's most sought after neighbourhoods.

Canfield Gardens is equidistant from Hampstead and West Hampstead, and right next to Finchley Road station for the Jubilee line, the Metropolitan line and the Overground. Waitrose supermarket in close by, as is the O2 Centre.

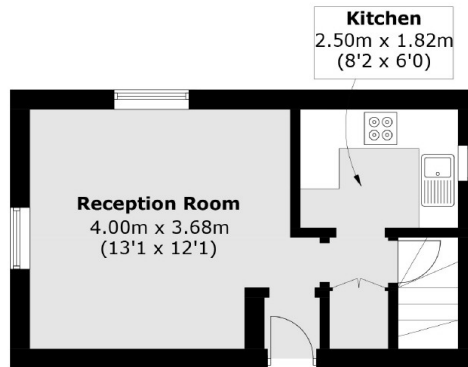
### Features

- Two Bedrooms
- Private Garden
- Garage
- Duplex Flat
- Victorian Conversion
- No Onward Chain

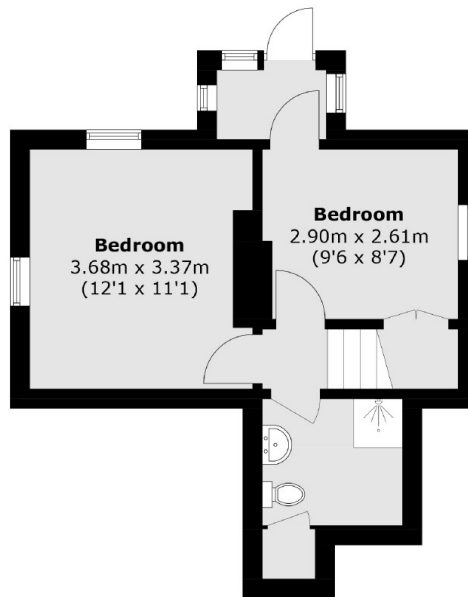
# Canfield Gardens, London, NW6



**Lower Ground Floor**



**Raised Ground Floor**



**Ground Floor**

Total area (approx.): 55.8 sq. m (600.7 sq. ft)  
Garage area (approx.): 14.0 sq. m (150.6 sq. ft)