



## Belsize Road, NW6

### £500,000

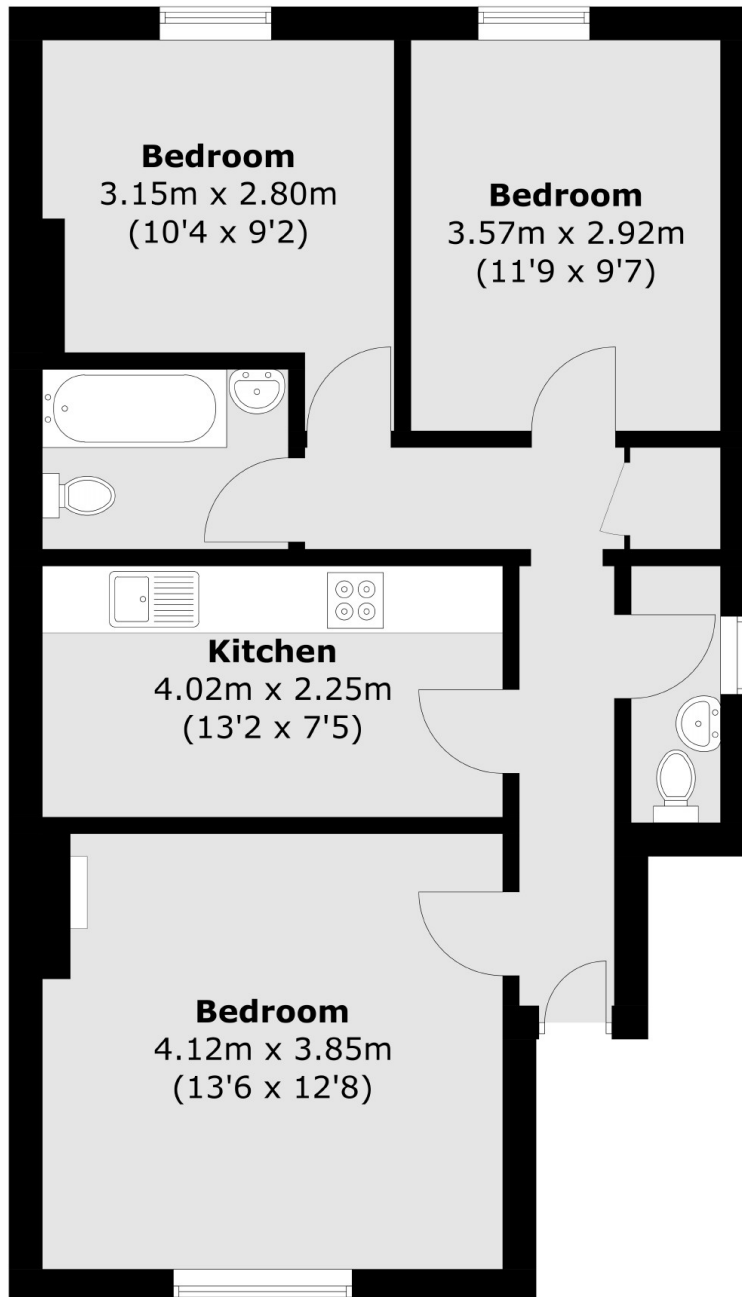
We are now in receipt of an offer for the sum of £431,000. Anyone wishing to place an offer on the property should contact us before exchange of contracts. This two bedroom flat is located on the raised ground floor of this converted semi detached Victorian house and is ideal for someone looking for a project. The property offers period charm with its high ceilings, a fireplace and it will be sold with no onward chain.

The apartment is located on Belsize Road which is ideal for easy access to Swiss Cottage underground station. There are multiple shops and other transport amenities nearby including Finchley Road tube station.

### Features

- Two Double Bedrooms
- High Ceilings
- Raised Ground Floor
- Victorian Conversion
- Close To Station
- No Onward Chain

# Belsize Road, London, NW6



Total area (approx.): 60.8 sq. m (654.4 sq. ft)