



Cavendish Road, NW6

£695,000

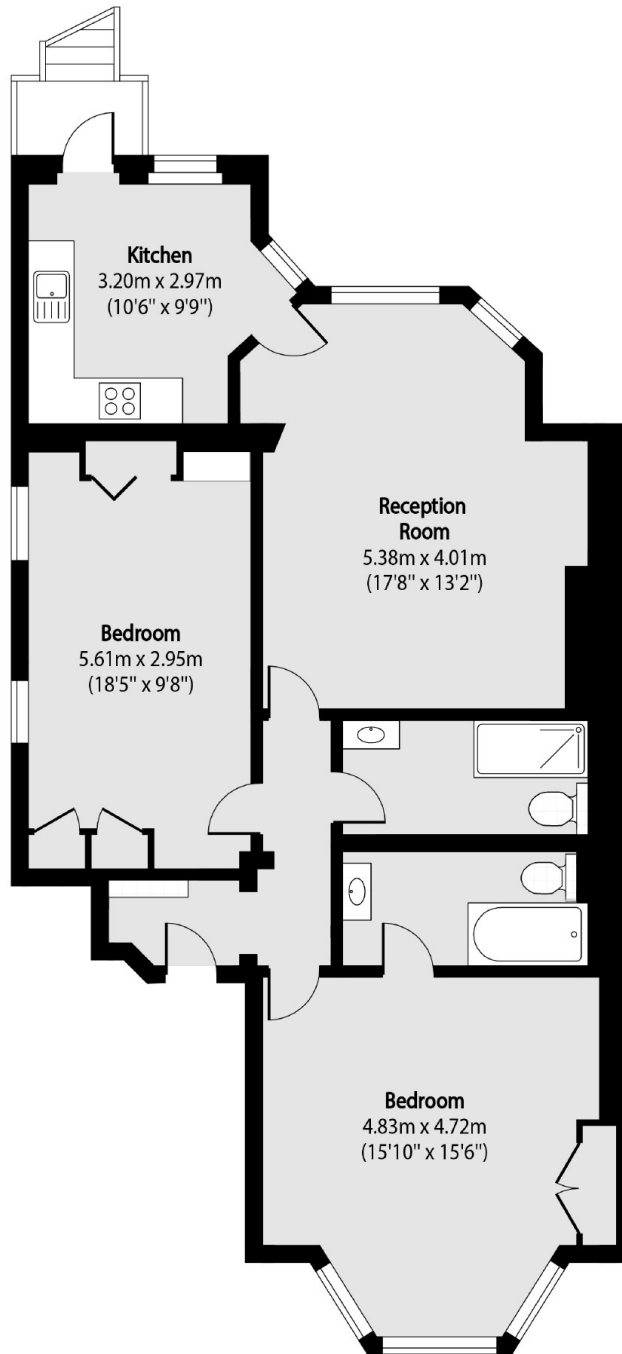
This two double bedroom garden flat is set on the raised ground floor of a Victorian conversion and has direct access to a large private garden. The property features the rarity of off street parking and has great potential.

Cavendish Road is conveniently located with good transport links to including Kilburn underground station (Jubilee Line) which is within 0.1 miles as well as many bus connections, shops bars and cafés.

Features

- Private Garden
- No Onward Chain
- Off Street Parking
- Two Double Bedrooms
- Victorian Features
- Raised Ground Floor

Cavendish Road,
London, NW6



Total area (approx): 87.88 sq m (946sq. ft)