

Finchley Road, NW3

£1,250,000

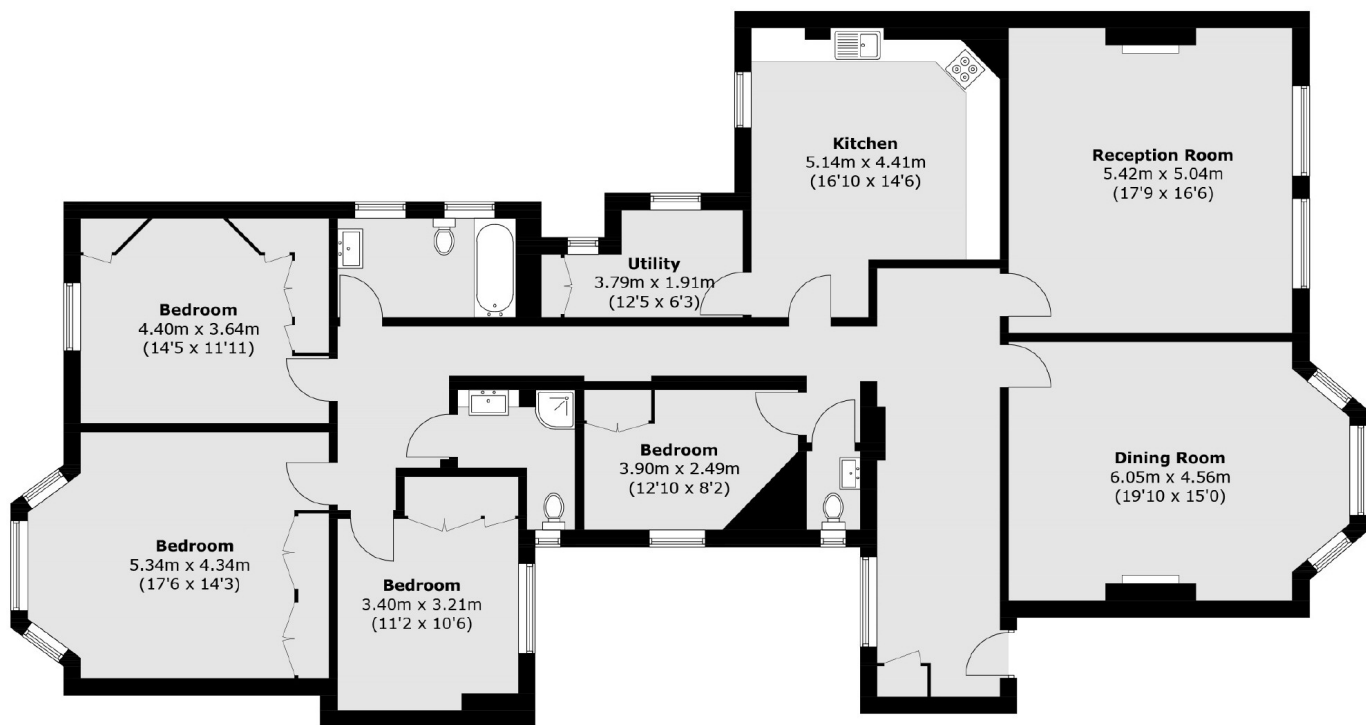
A rare opportunity to purchase a grand four bedroom apartment (with lift service) in need of modernisation in this prestigious portered mansion block. Further benefits include hot water being included in the service charge, access to the well maintained communal gardens and a share of freehold.

Perfectly located between Hampstead and West Hampstead with a number of different options for public transport close by. Hampstead Heath is just over a mile away.

Features

- Mansions Block
- Communal Gardens
- Two Bathrooms
- Four Bedrooms
- Two Reception Rooms
- No Onward Chain

Finchley Road, London, NW3



Total area (approx.): 190.9 sq. m (2054.8 sq. ft)