



## Finchley Road, NW11

### £429,950

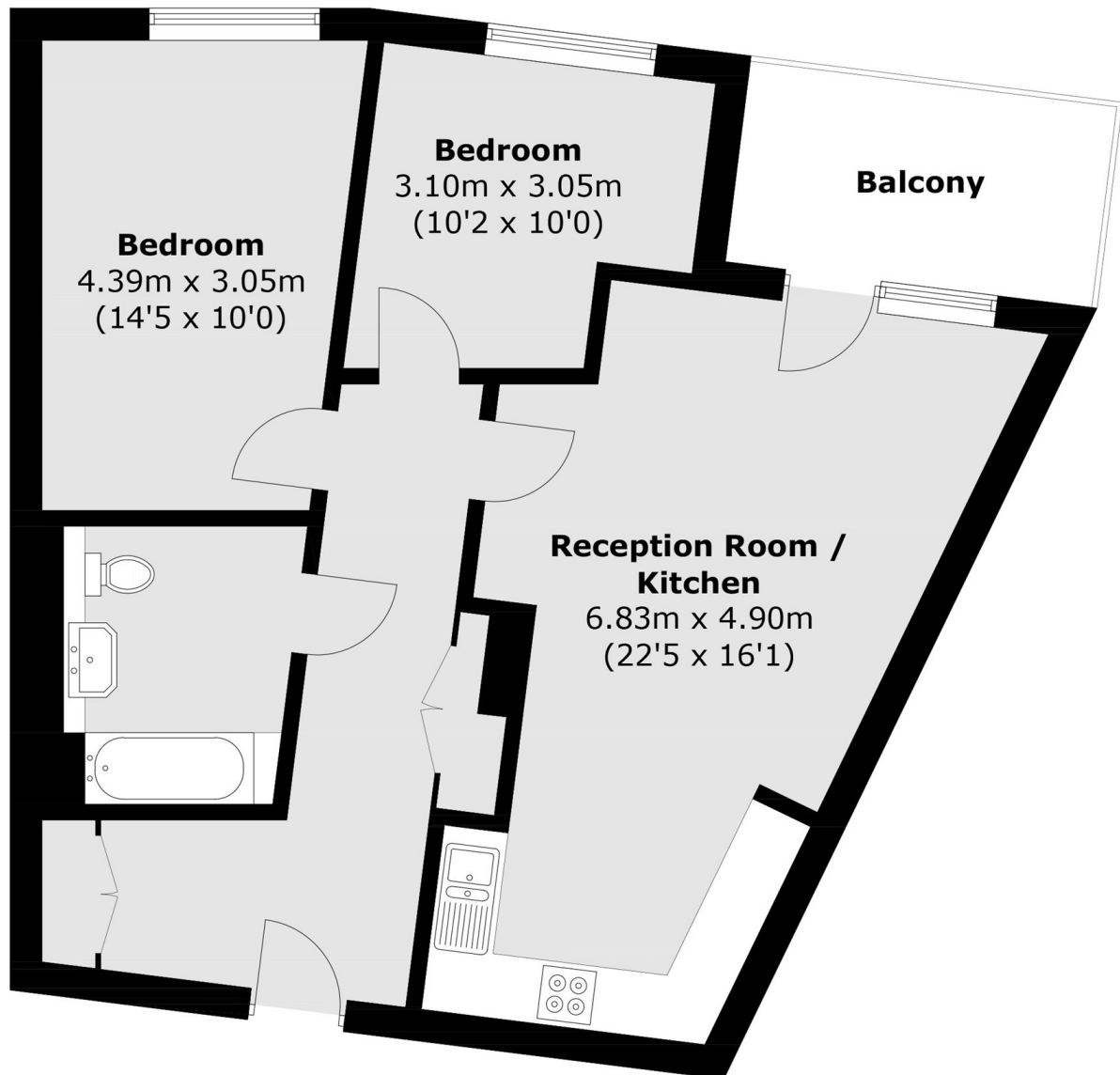
This two bedroom modern flat is located on the second floor (with lift) in this popular purpose built block. The property benefits from a private balcony and a large communal terrace.

Close to Golders Green tube, Cricklewood Thameslink and a number of bus routes on the doorstep. There is also the open spaces of Hampstead Heath and Golders Hill Park close by.

### Features

- Two Double Bedrooms
- Private Balcony
- Integrated Appliances
- Open Plan
- Second Floor
- Close To Amenities

Finchley Road,  
London, NW11



Total area (approx.): 66.8 sq. m (719.0 sq. ft)  
Balcony: 6.5 sq. m (70.0 sq. ft)

**Dexters**

West Hampstead Sales  
349 West End Lane  
London  
NW6 1LT  
Sales  
020 7644 9300

Energy Rating: B. We aim to make our particulars both accurate and reliable. However they are not guaranteed; nor do they form part of an offer or contract. If you require clarification on any points then please contact us, especially if you're traveling some distance to view. Please note that appliances and heating systems have not been tested and therefore no warranties can be given as to their good working order.

 **RICS** | Regulated  
Estate Agent  
and Letting Agent

dexters.co.uk