



Honeybourne Road, NW6

£850,000

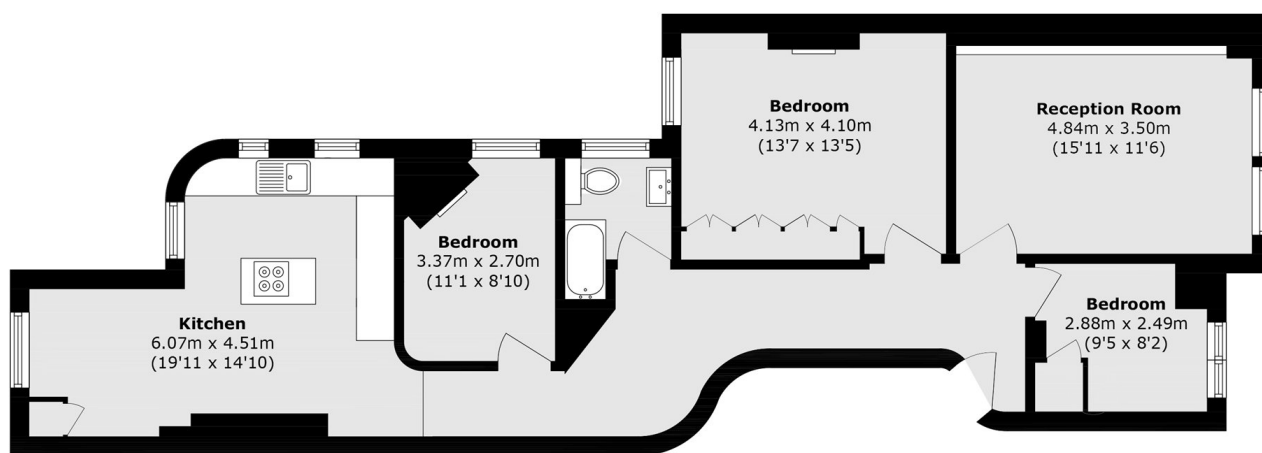
A three bedroom apartment located on the top floor of this prestigious and highly sought after Edwardian mansion block. The property benefits from a fully fitted kitchen dining room, well looked after communal gardens and it will be sold with no onward chain.

Honeybourne Road is a highly sought after quiet residential street which is conveniently located with easy access of the shops, bars and restaurants of West End Lane including multiple transport links.

Features

- Three Bedrooms
- Top Floor
- Open Plan
- Porter
- Communal Gardens
- No Onward Chain

Honeybourne Road, London, NW6



Total area (approx.): 88.6 sq. m (953.6 sq. ft)