



Dennington Park Road, NW6

£850,000

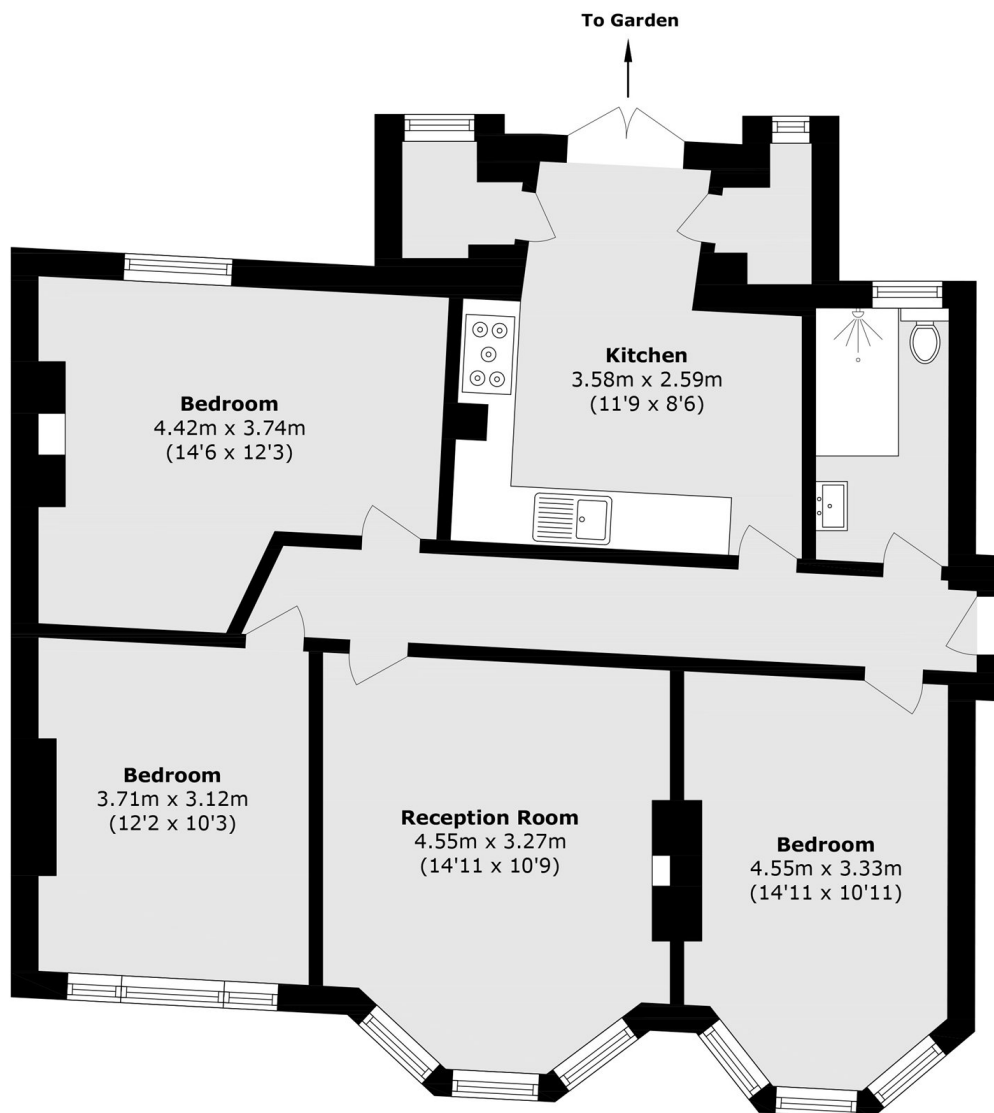
A beautifully presented three double bedroom apartment on the ground floor of a popular West Hampstead mansion block. It features a modern fully fitted eat-in kitchen/breakfast room, a separate living room, and direct access to communal gardens.

Dennington Park Road is located moments from all the popular cafes, restaurants and shopping outlets on West End Lane and conveniently located 0.2 miles to the transport links West Hampstead has to offer which include the Underground (Jubilee line), Overground and Thameslink stations.

Features

- Ground Floor
- Access To Communal Gardens
- Three Double Bedrooms
- Popular Mansion Block
- Recently Decorated
- Share Of Freehold

Dennington Park Road, London, NW6



Total area (approx.): 89.2 sq. m (960.1 sq. ft)