



Greencroft Gardens, NW6

£735,000

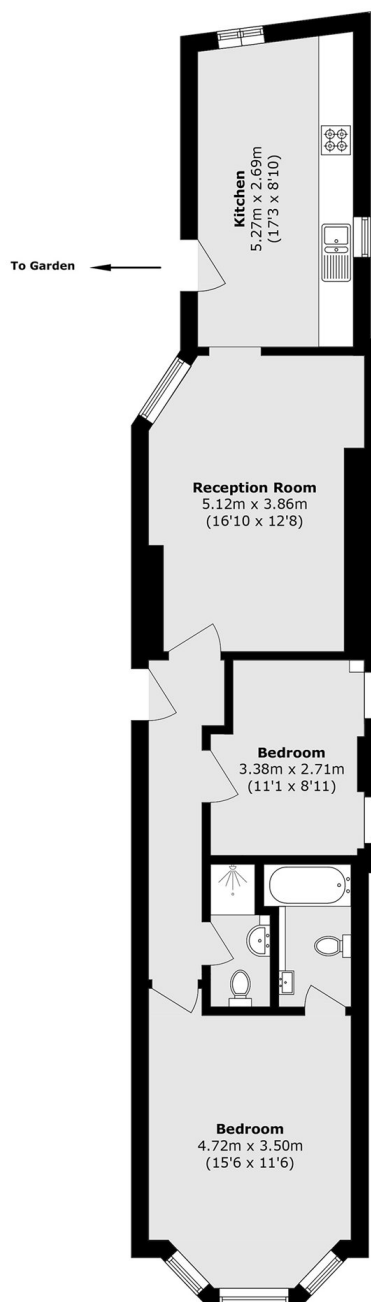
A charming two bedroom, two bathroom ground floor apartment in an elegant Victorian conversion. Enjoy direct access to the communal garden, offering rare outdoor space and a wonderful sense of openness. Offered with no onward chain.

Greencroft Gardens is situated within the South Hampstead Conservation Area. Finchley Road underground station and West Hampstead train stations, as well as the local amenities of West End Lane are within easy reach.

Features

- Two Bedrooms
- Communal Garden
- Two Bathrooms
- Ground Floor
- Victorian House
- No Onward Chain

Greencroft Gardens, London, NW6



Total area (approx.): 71.5 sq. m (769.6 sq. ft)

Dexters

West Hampstead Sales
349 West End Lane
London
NW6 1LT
Sales
020 7644 9300

Energy Rating: C. We aim to make our particulars both accurate and reliable. However they are not guaranteed; nor do they form part of an offer or contract. If you require clarification on any points then please contact us, especially if you're traveling some distance to view. Please note that appliances and heating systems have not been tested and therefore no warranties can be given as to their good working order.

 **RICS** | Regulated
Estate Agent
and Letting Agent

[dexters.co.uk](https://www.dexters.co.uk)