



Finchley Road, NW2

£799,950

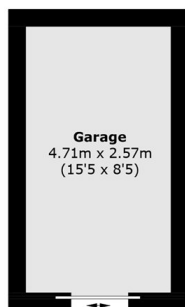
This four bedroom Tudor style mansion apartment is set on the second floor (with lift) and offers over 1400 sq.ft of accommodation and it includes a garage. The spacious property benefits from lift access and communal gardens. Share of freehold.

Transport links and amenities are abundant with the likes of Hampstead, West Hampstead and Golders Green all being within close proximity. For beautiful scenic walks and general recreation, Hampstead Heath and Golders Hill Park are a short walk away.

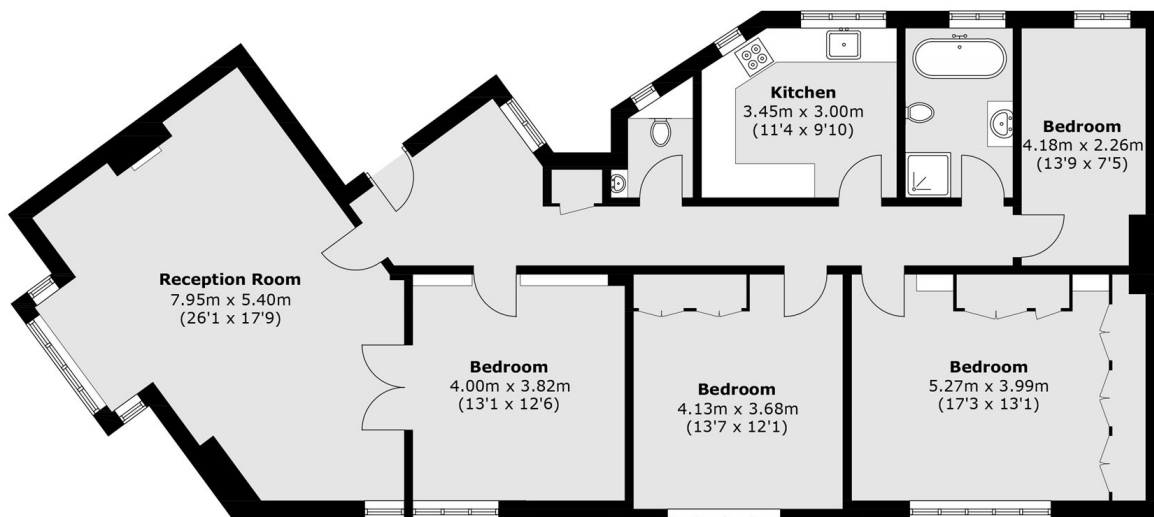
Features

- Four Bedrooms
- Garage
- Mansion Apartment
- Over 1400 Sq.Ft
- Lift Access
- Share of Freehold

Finchley Road, London, NW2



Ground Floor



Second Floor

Total area (approx.): 133.7 sq. m (1,439.1 sq. ft)

Garage area (approx.): 12.1 sq. m (130.2 sq. ft)