

Hodford Road, NW11

£449,950

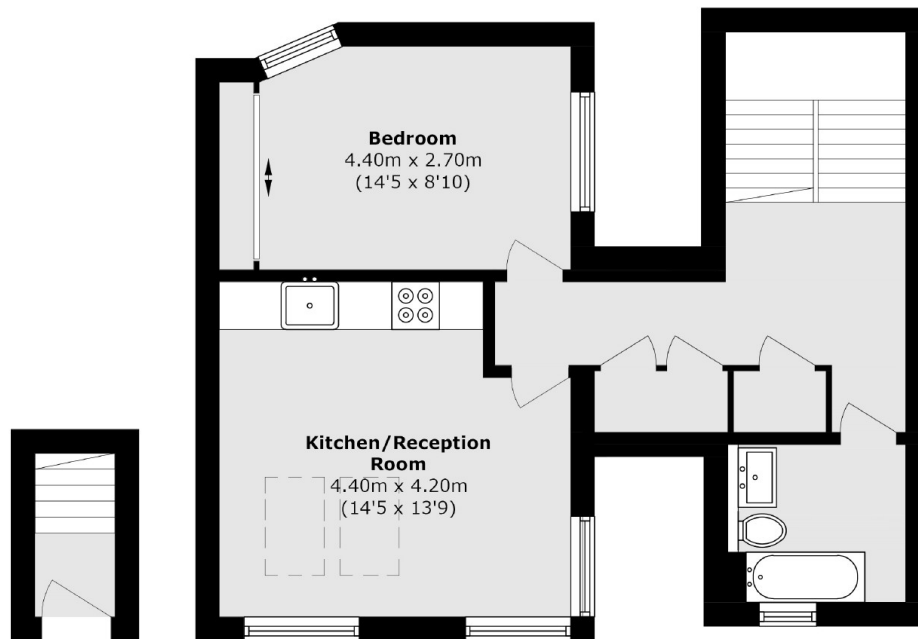
This very impressive one bedroom apartment has its own entrance and is located on the first floor of this modern building. The property is located in a secure gated development and it benefits from communal gardens.

Hodford Road is perfectly located for easy access to Golders Green underground station (Northern line) and all the shops and amenities of Golders Green Road with Hampstead Heath also nearby.

Features

- One Double Bedroom
- Modern Apartment
- Own Entrance
- Gated Development
- Communal Garden
- Integrated Appliances

Hodford Road, London, NW11



Ground Floor

First Floor

Total area (approx.): 53.1 sq. m (571.5 sq. ft)