



Parsifal Road, NW6

£575,000

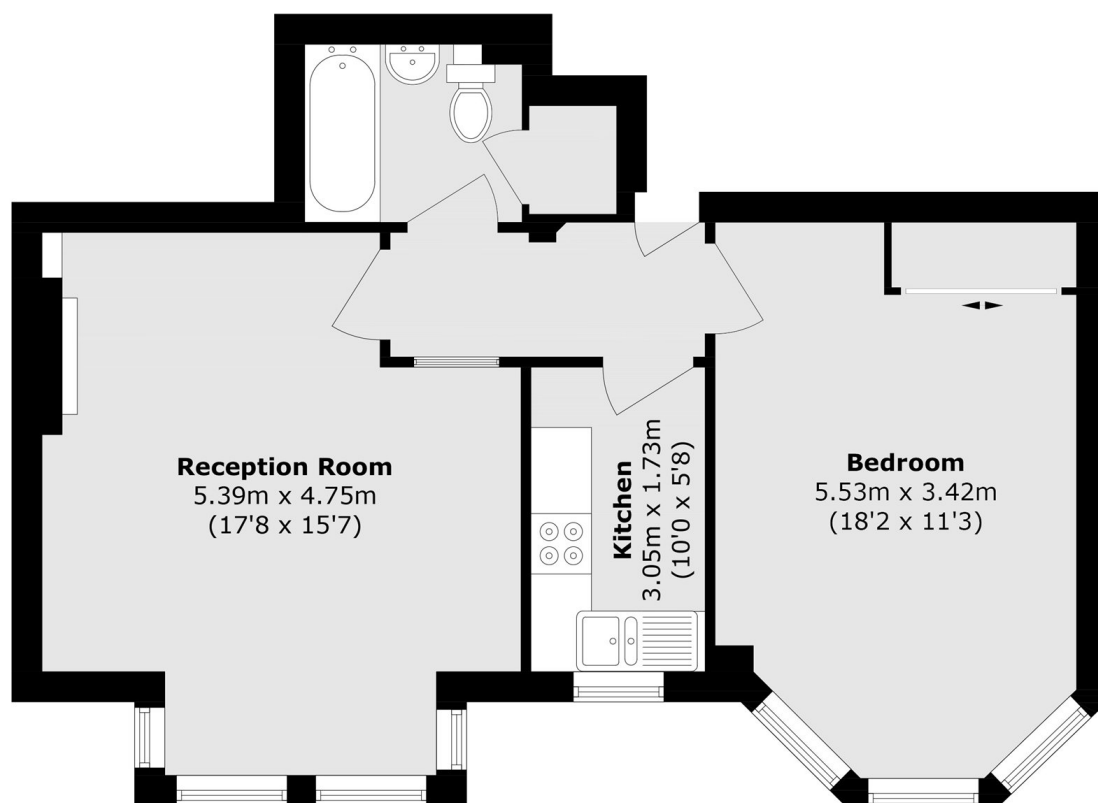
An elegant Victorian conversion offering a spacious double bedroom and impressive reception room, both featuring bay windows and a charming feature fireplace. Offered with no onward chain, this character-filled home is ideal for first time buyers or investors.

Parsifal Road is, ideally located with West Hampstead underground (Jubilee Line), Finchley Road underground (Jubilee & Metropolitan Lines) and with Finchley Road and Frognal station close by.

Features

- One Bedroom
- First Floor
- Bay Window
- Period Features
- Close To Station
- No Onward Chain

Parsifal Road, London, NW6



Total area (approx.): 55.8 sq. m (600.6 sq. ft)