



Belsize Park, NW3

£3,000,000

Dexters



Belsize Park, NW3

This elegant split-level garden maisonette is set within a charming period conversion in the heart of Belsize Park.

Accessed via its own private entrance, the property offers impressive ceiling heights and a sense of grandeur throughout.

The spacious open-plan kitchen and reception room opens directly onto a well-maintained shared garden, ideal for indoor-outdoor living. Accommodation comprises three generous bedrooms, three stylish bathrooms.

Thoughtfully laid out over two levels, the home combines period character with modern finishes. Offered with a share of freehold and sold chain free, it's an exceptional opportunity in a sought-after location.

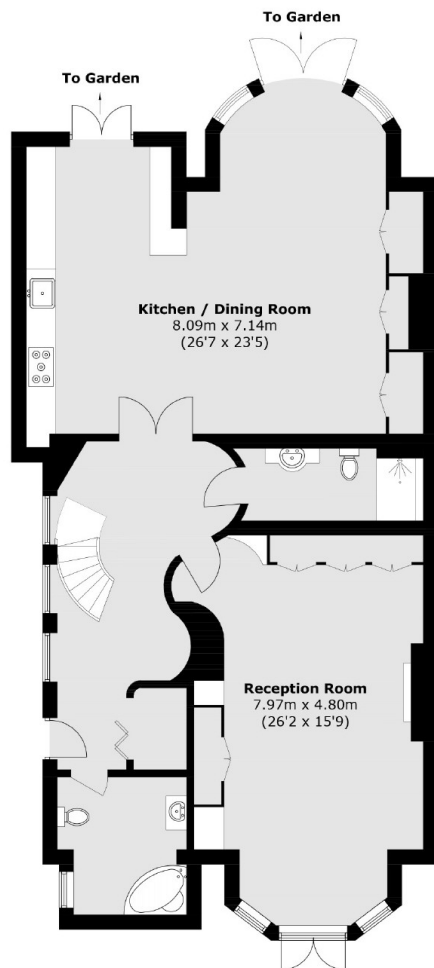
Belsize Park is a leafy, village-like enclave near independent cafés, boutiques, and gastropubs. The neighbourhood is well-connected: served directly by Belsize Park station (Northern line) and Swiss Cottage station (Jubilee line) plus easy bus links.

Features

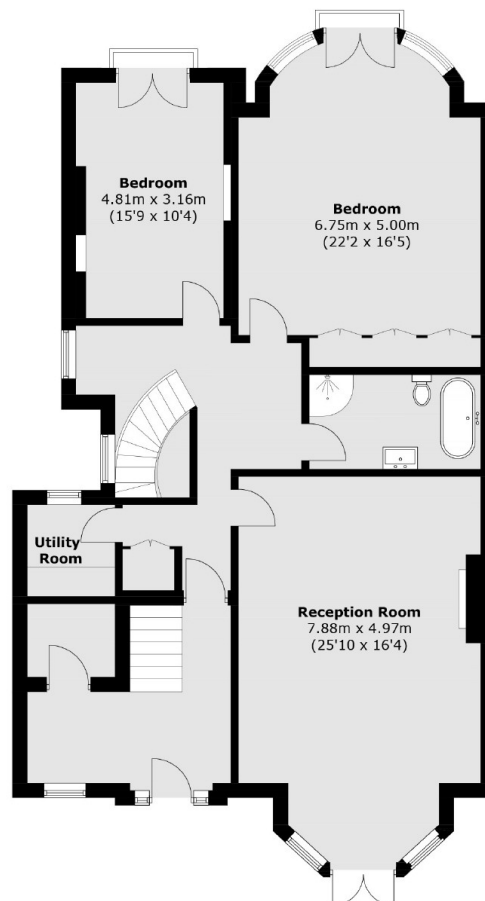
- Three Bedrooms
- Chain Free
- Share of Freehold
- High Ceilings
- Shared Garden
- Three Bathrooms



Belsize Park, London, NW3



Lower Ground Floor



Raised Ground Floor

Total area (approx.): 249.3 sq.m (2,683.3 sq. ft)