



Finchley Road, NW3

£575,000

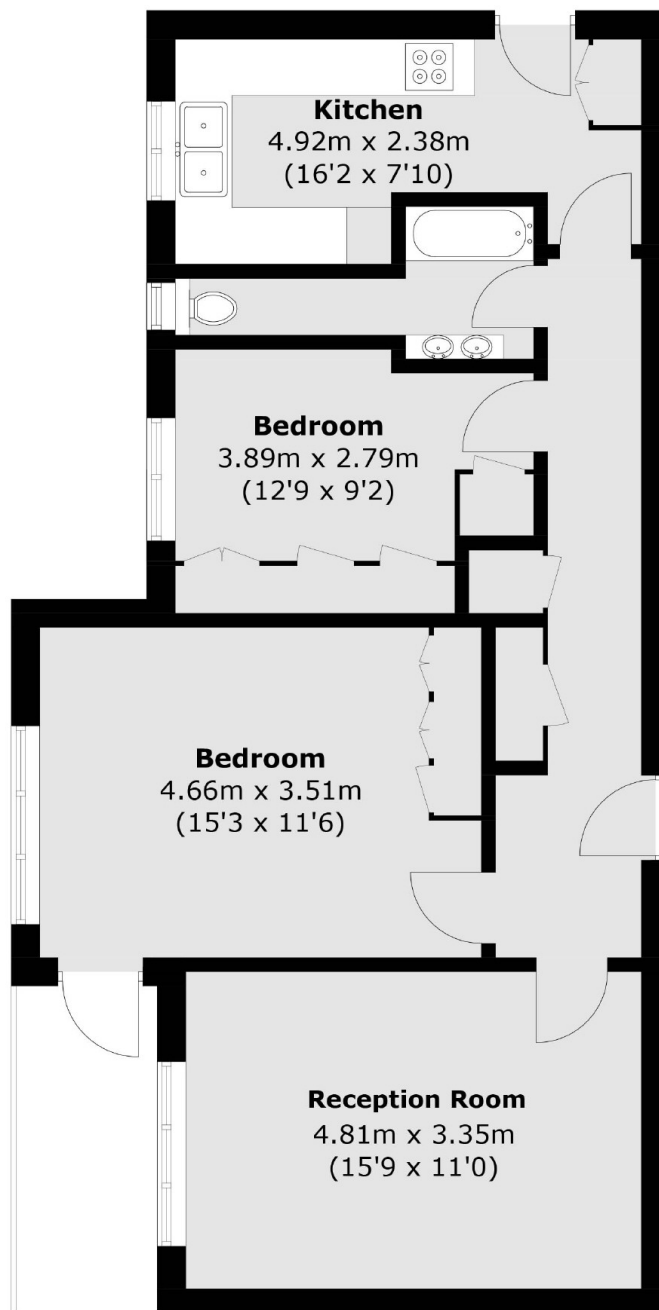
A bright and well-proportioned two bedroom, share of freehold apartment in a purpose-built block with lift access. Features include a spacious reception room with balcony, separate kitchen, and modern bathroom.

Between Childs Hill and Hampstead, an established urban-village with independent cafés, parks like Golders Hill, and leafy period streets. Excellent transport links include GoldersGreen (Northern line) 0.6mi, plus Finchley Road tube (Jubilee & Metropolitan) and bus routes on your doorstep.

Features

- Share of Freehold
- Two Bedrooms
- Separate Kitchen
- Balcony
- Great Transport Links
- Golders Hill Park

Finchley Road, London, NW3



Total area (approx.): 70.0 sq. m (753.4 sq. ft)
Balcony area : 5.1 sq. m (54.8 sq. ft)

Dexters

Hampstead
56 Heath Street
London
NW3 1DL
Sales
020 7433 0273

Energy Rating: C. We aim to make our particulars both accurate and reliable. However they are not guaranteed; nor do they form part of an offer or contract. If you require clarification on any points then please contact us, especially if you're traveling some distance to view. Please note that appliances and heating systems have not been tested and therefore no warranties can be given as to their good working order.

 **RICS** | Regulated
Estate Agent
and Letting Agent

[dexters.co.uk](https://www.dexters.co.uk)