



Finchley Road, NW3

£500,000

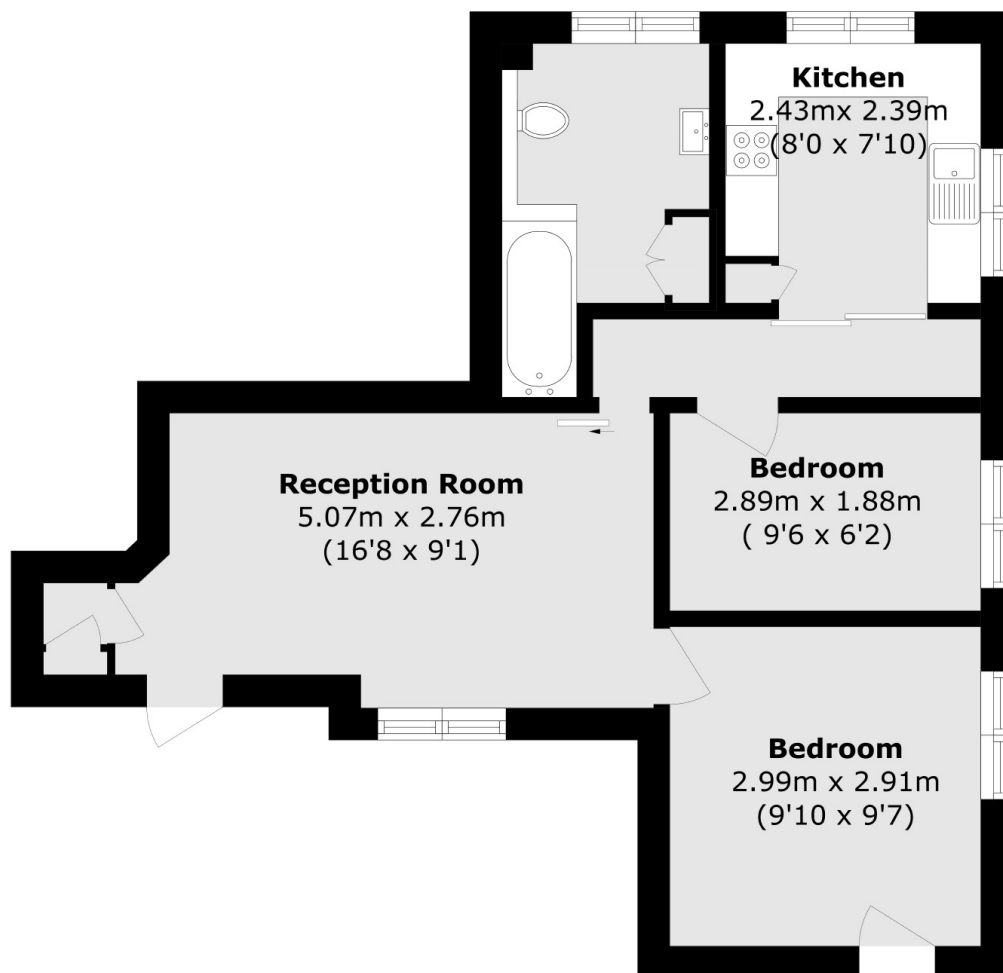
A bright and modern two bedroom ground floor flat presented in very good condition with a separate kitchen, private patio garden and private entrance.

Located close to the multiple shops and amenities of Swiss Cottage and Finchley Road and only , 0.1 miles from Finchley Road Underground Station (Metropolitan and Jubilee Lines) and 0.2 miles from Swiss Cottage Underground Station (Jubilee Line)

Features

- Private Entrance
- Excellent Condition
- Two Bedroom
- Private Garden
- Chain Free
- Great Transport Links

Finchley Road,
London, NW3



Total area (approx.): 43.4 sq. m (467.1 sq. ft)

Dexters

Hampstead
56 Heath Street
London
NW3 1DL
Sales
020 7433 0273

Energy Rating: D. We aim to make our particulars both accurate and reliable. However they are not guaranteed; nor do they form part of an offer or contract. If you require clarification on any points then please contact us, especially if you're traveling some distance to view. Please note that appliances and heating systems have not been tested and therefore no warranties can be given as to their good working order.

 **RICS** | Regulated
Estate Agent
and Letting Agent

[dexters.co.uk](https://www.dexters.co.uk)