



Denning Road, NW3

£925,000

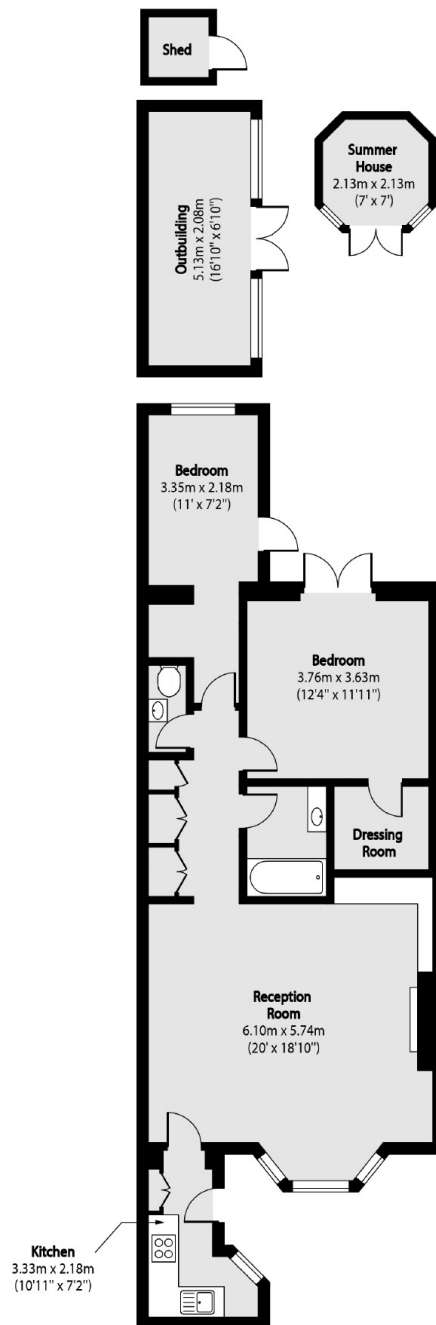
At approximately 850 square feet is this two-bedroom flat that has a private entrance and stunning private garden, set on one of Hampstead's most desirable spots by the Heath and High Street.

Denning Road is a quiet residential turning ideally located approximately 300 yards from the varied shops cafes & restaurants that Hampstead Village (Northern Line) provides. The open acres of Hampstead Heath are also located just 100 yards.

Features

- Two Double Bedrooms
- Beautiful Garden
- Private Entrance
- Chain Free
- By Hampstead Heath
- Share of Freehold

Denning Road, London, NW3



Total area (approx): 77.20 sq m (831 sq. ft)

(Excluding Shed, Summer House & Outbuilding)

Outbuilding total area (approx): 10.50 sq m (113 sq. ft)

Summer House total area (approx): 4.18 sq m (45 sq. ft)

Dexters

Hampstead
56 Heath Street
London
NW3 1DL
Sales
020 7433 0273

Energy Rating: D. We aim to make our particulars both accurate and reliable. However they are not guaranteed; nor do they form part of an offer or contract. If you require clarification on any points then please contact us, especially if you're traveling some distance to view. Please note that appliances and heating systems have not been tested and therefore no warranties can be given as to their good working order.

 **RICS** | Regulated
Estate Agent
and Letting Agent

[dexters.co.uk](https://www.dexters.co.uk)