



## The Mount Square, NW3

### £1,600,000

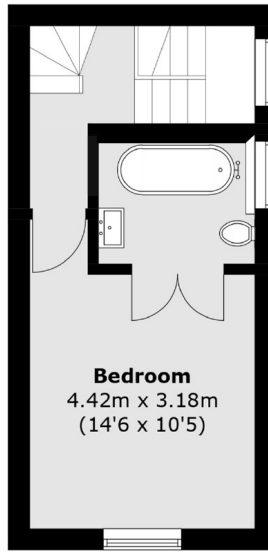
A stunning two bedroom Grade II Listed period house, dating back to the late 18th century, having recently undergone a complete, extensive and beautiful renovation by the current owners.

Located in this enviable position in heart of Hampstead Village, within close proximity of the Heath and Hampstead Underground Station (Northern Line)

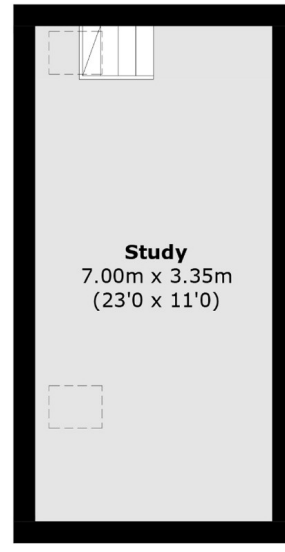
### Features

- Listed Period House
- Two Bedrooms
- Two Bathrooms
- Pretty Garden
- Loft Room
- Sole Agent

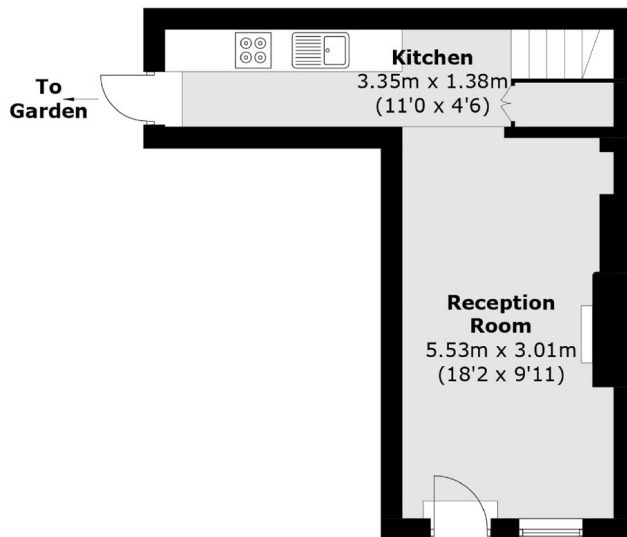
# The Mount Square, London, NW3



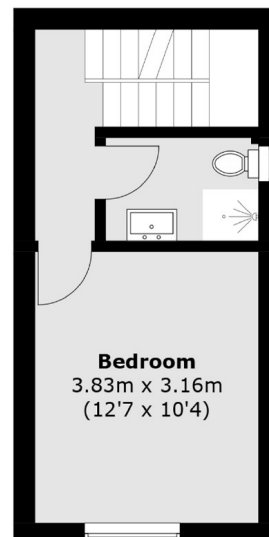
**Second Floor**



**Third Floor**



**Ground Floor**



**First Floor**

Total area (approx.): 93.5 sq. m (1,006.5 sq. ft)