

## Finchley Road, NW3

### £525,000

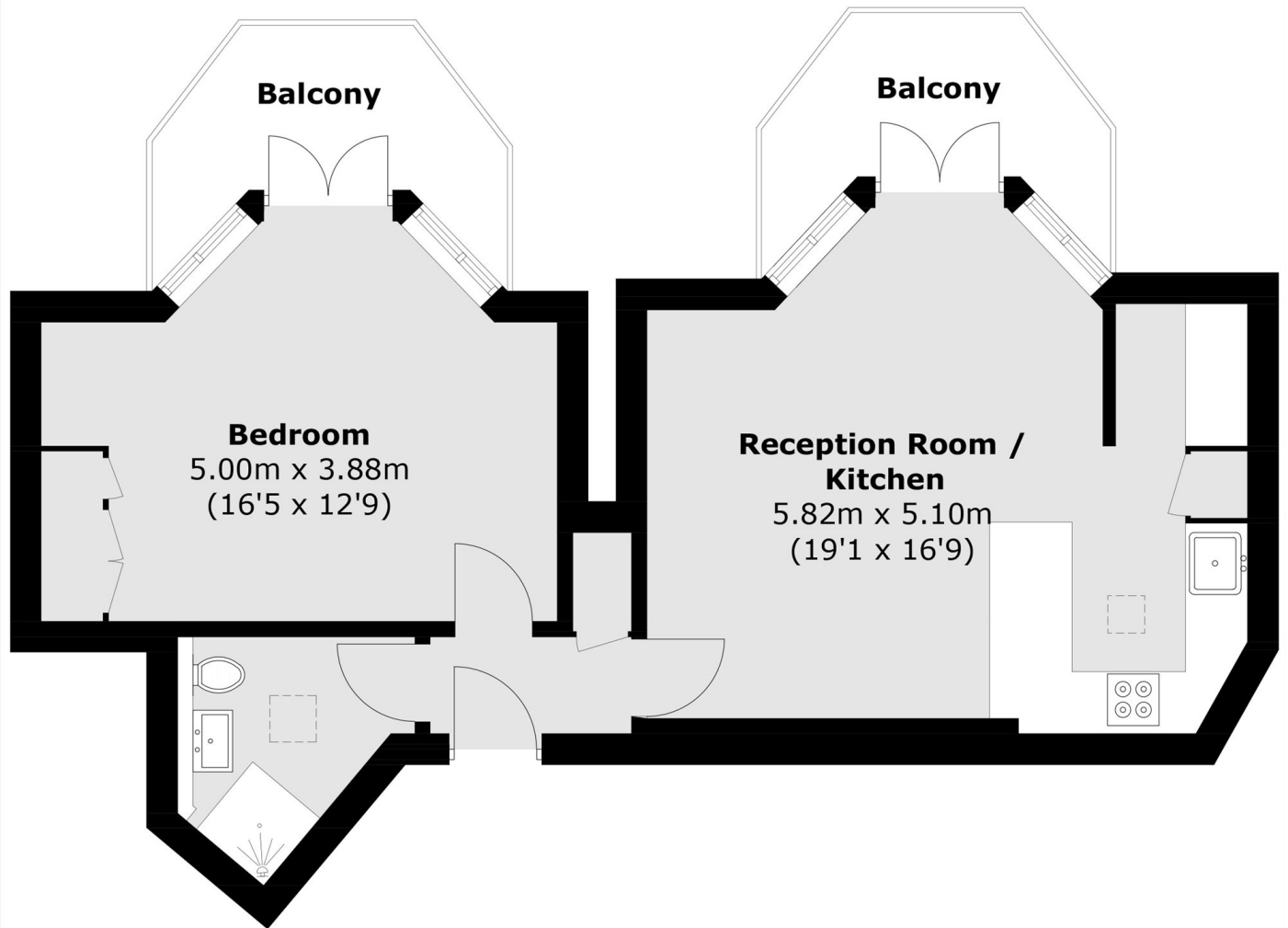
A beautifully presented one-bedroom apartment situated on the fourth floor of this prestigious mansion block, complete with a lift and access to well-maintained communal gardens. The property enjoys exceptional views across London, offering an abundance of natural light and a wonderful sense of space.

Set along leafy Langland Gardens, this peaceful Hampstead location offers easy access to the shops and cafés of Finchley Road and West Hampstead. Excellent transport links include Finchley Road (Jubilee & Metropolitan Lines) and Finchley Road & Frognal (Overground).

#### Features

- Two Balconies
- Lift
- Great Condition
- Close proximity to tube
- Chain Free
- Natural Light

Finchley Road,  
London, NW3



Total area (approx.): 50.8 sq. m (546.8 sq. ft)  
Balcony : 10.7 sq. m (115.2 sq. ft)

**Dexters**

Hampstead  
56 Heath Street  
London  
NW3 1DL  
Sales  
020 7433 0273

Energy Rating: D. We aim to make our particulars both accurate and reliable. However they are not guaranteed; nor do they form part of an offer or contract. If you require clarification on any points then please contact us, especially if you're traveling some distance to view. Please note that appliances and heating systems have not been tested and therefore no warranties can be given as to their good working order.

 **RICS** | Regulated  
Estate Agent  
and Letting Agent

[dexters.co.uk](http://dexters.co.uk)