



Prince Albert Road, NW8

£2,600,000

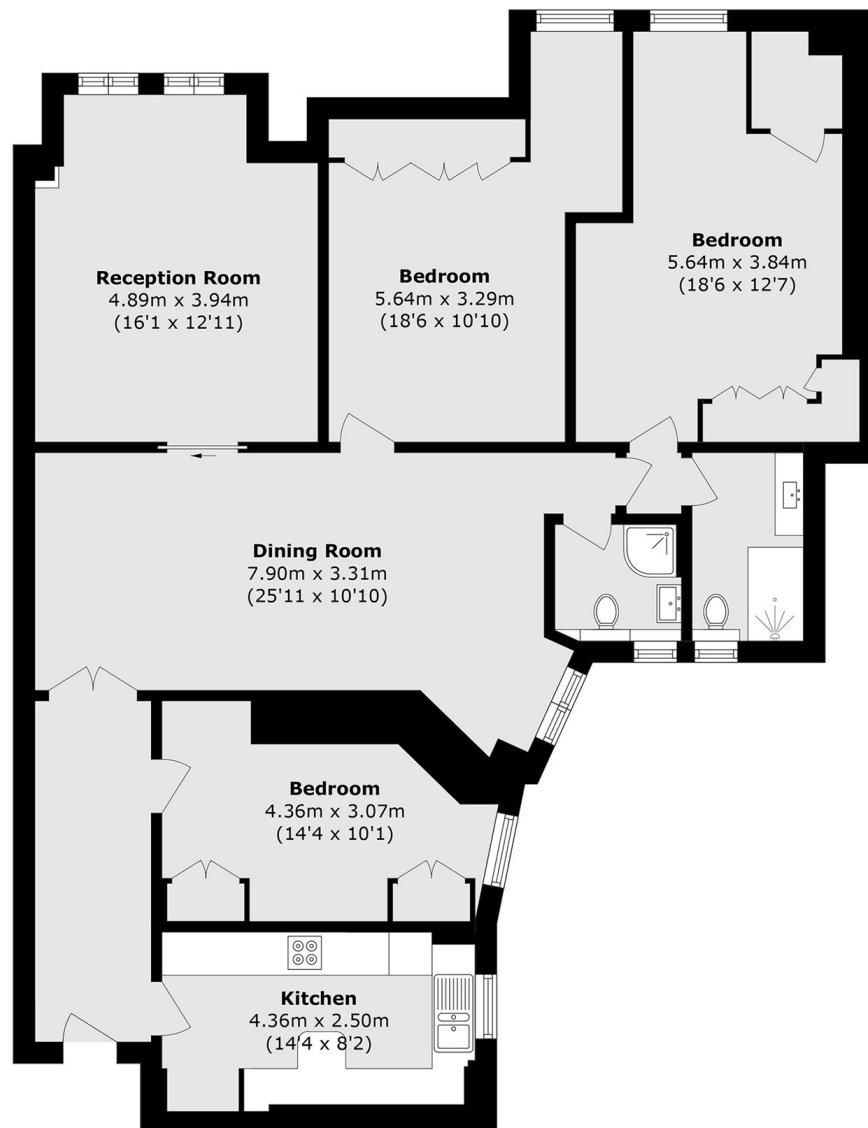
Forming part of this beautiful and highly sought after portered mansion block is this three bedroom apartment. There is a lift service, spacious entrance hall, modern kitchen inter connecting reception room which provides ample space for both living and dining areas.

Located directly opposite Regents Park in one of St Johns Woods most requested areas. There is a great selection of cafes, bars, shops and restaurants. There are excellent transport links with St Johns Wood tube (Jubilee line) which is 0.5 of a mile away and Baker Street (Bakerloo, Circle, Hammersmith & City, Jubilee & Metropolitan) which is 0.7 of a mile away.

Features

- Three Bedrooms
- Two Shower Rooms
- Modern Kitchen
- Lift & Porter
- Non Allocated Parking
- Chain Free

Prince Albert Road, London, NW8



Fifth Floor

Total area (approx.): 127.6 sq. m (1373.5 sq. ft)