



Kidderpore Avenue, NW3

£1,350,000

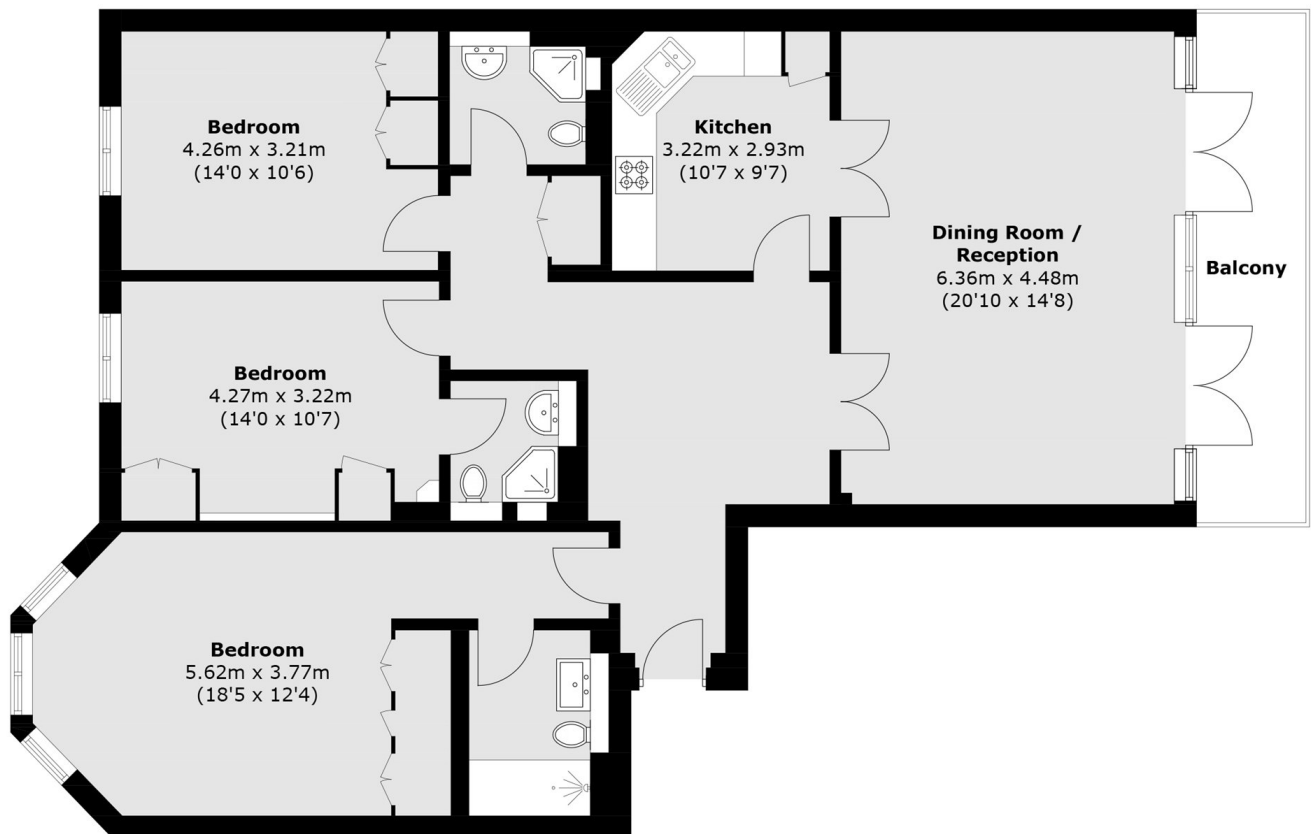
A well-proportioned three-bedroom second-floor apartment offering excellent lateral space and comfortable living. The property includes three bathrooms, a balcony off the reception room, and access to communal gardens, as well as concierge services, a residents' gym, and swimming pool. Further benefits include one secure underground parking space.

This highly sought after and prestigious development is located within easy access of Hampstead tube station with Northern line services to the centre of London. Finchley Road & Finchley Road and Frognal stations are also accessible offering Metropolitan, Jubilee Line & Thameslink services.

Features

- Prestigious Development
- Concierge
- Swimming Pool
- Gym
- Communal Gardens
- Three Bedrooms

Kidderpore Avenue, London, NW3



Total area (approx.): 124.3 sq. m (1,337.9 sq. ft)
Balcony : 10.1 sq. m (108 sq. ft)

Dexters

Hampstead
56 Heath Street
London
NW3 1DL
Sales
020 7433 0273

Energy Rating: B. We aim to make our particulars both accurate and reliable. However they are not guaranteed; nor do they form part of an offer or contract. If you require clarification on any points then please contact us, especially if you're traveling some distance to view. Please note that appliances and heating systems have not been tested and therefore no warranties can be given as to their good working order.

 **RICS** | Regulated
Estate Agent
and Letting Agent

[dexters.co.uk](https://www.dexters.co.uk)