



Fitzjohns Avenue, NW3

£450,000

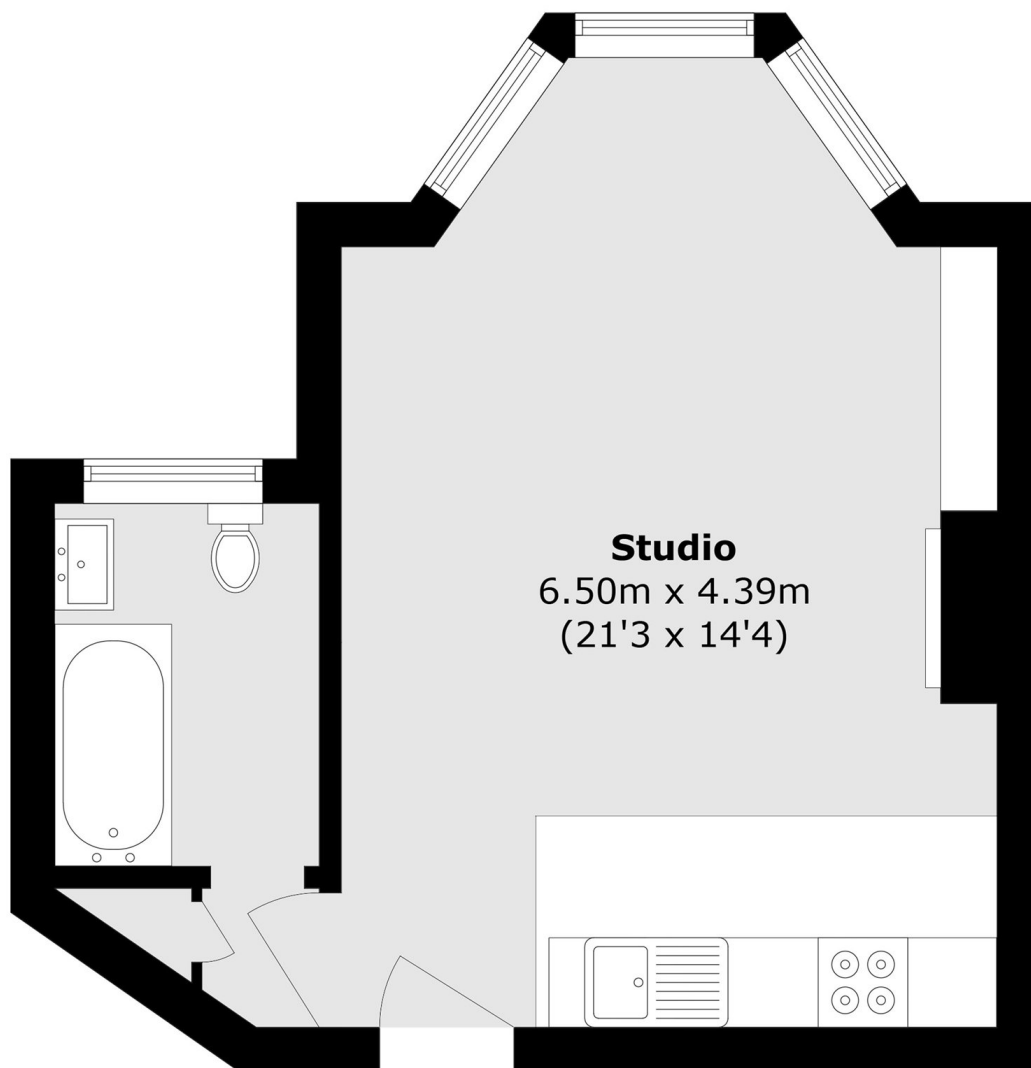
A large studio apartment offered chain free and presented in good condition throughout, featuring impressive high ceilings and bright living space. Ideal as a first time purchase or pied-à-terre in a prime Hampstead location.

Fitzjohns Avenue is one of Hampstead's most prestigious and sought-after addresses, known for its elegant period buildings and leafy surroundings. Hampstead Village, the High Street, and Hampstead Heath are all within easy reach. Excellent transport links include Hampstead Underground Station (Northern Line) and Finchley Road (Jubilee & Metropolitan Lines).

Features

- Studio Apartment
- Excellent Location
- Northern Line
- High Ceilings
- Long Lease
- Chain Free

Fitzjohns Avenue, London, NW3



Total area (approx.): 31.9 sq. m (343.4 sq. ft)