



## Elizabeth Mews, NW3

### £1,000,000

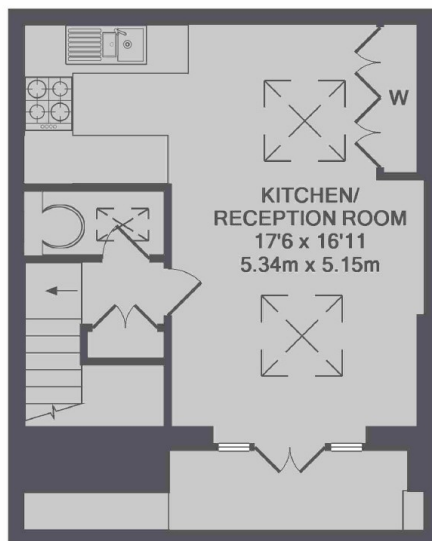
Duplex apartment on a cobbled street tucked away in prime Belsize Park. Over the top two floors with two bedrooms, shower room and family bathroom in addition to an open plan reception room with private balcony.

Popular location amongst excellent local shops, cafés and restaurants. Walking distance to Belsize Park station, lots of local amenities and the open parkland of Primrose Hill.

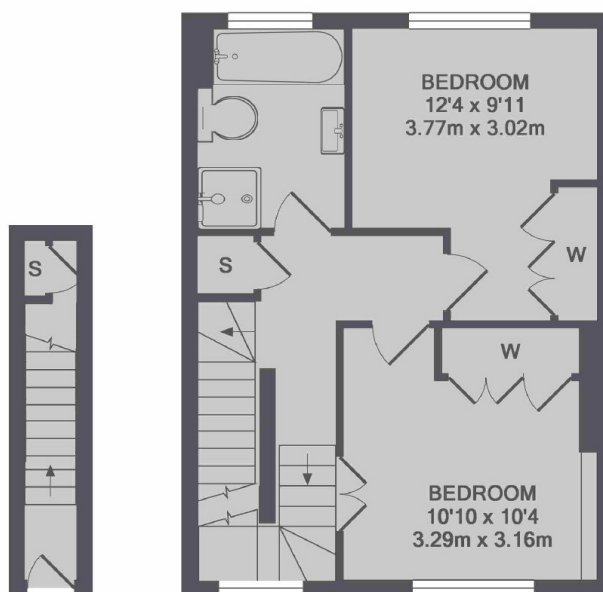
### Features

- Duplex Apartment
- Two Bedrooms
- Private Balcony
- Open Plan Reception
- Prime Belsize Park
- Oak Flooring

# Elizabeth Mews, London, NW3



2ND FLOOR



GROUND FLOOR

1ST FLOOR

TOTAL APPROX. FLOOR AREA 789 SQ.FT. (73.3 SQ.M.)

## Dexters

Hampstead  
56 Heath Street  
London  
NW3 1DL  
Sales  
020 7433 0273

Energy Rating: C. We aim to make our particulars both accurate and reliable. However they are not guaranteed; nor do they form part of an offer or contract. If you require clarification on any points then please contact us, especially if you're traveling some distance to view. Please note that appliances and heating systems have not been tested and therefore no warranties can be given as to their good working order.



dexters.co.uk