



Parkgate Mews, N6

£2,600 Per calendar month

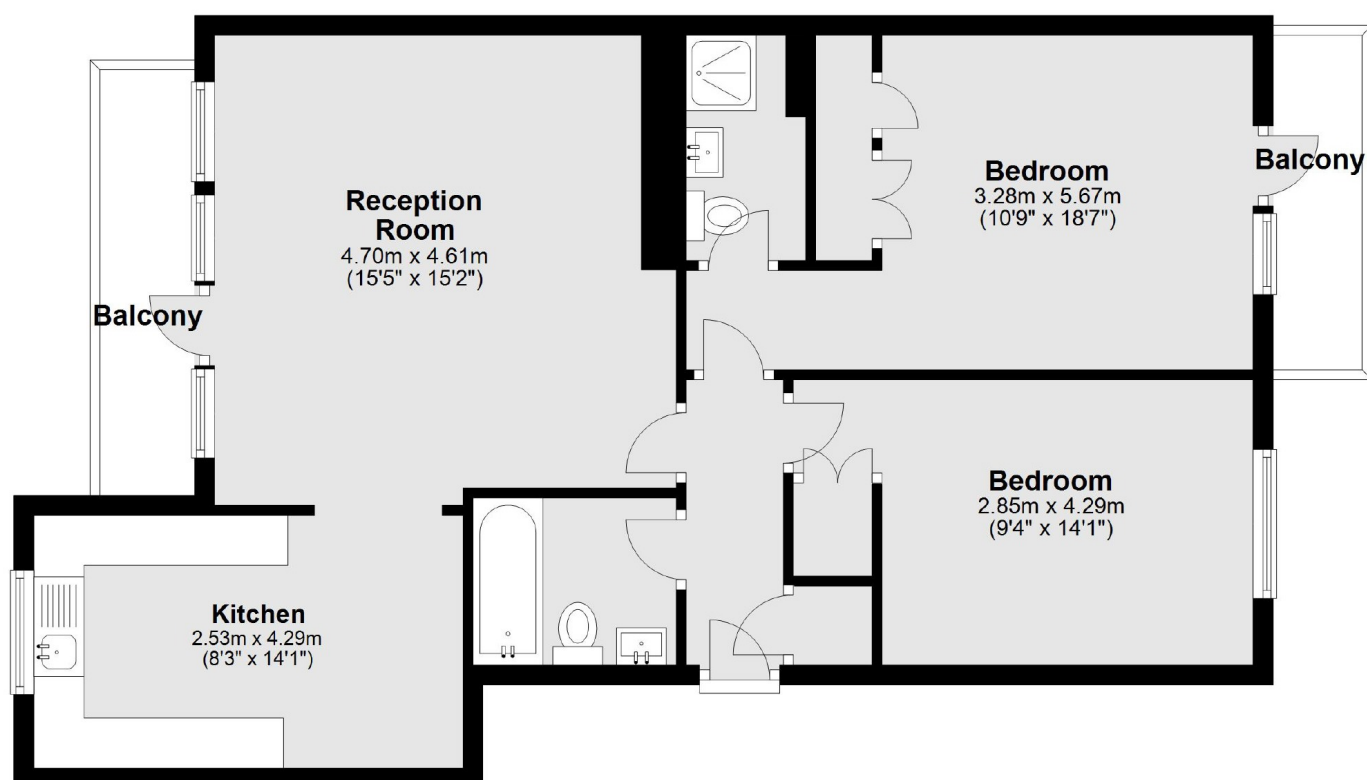
In this small modern purpose built block with a secure gated entrance, an exceptionally well presented two bedroom apartment with passenger lift, modern kitchen and bathrooms.

Positioned within reach of two underground stations, there is a handy bus service and an entrance to Parkland Walk, a scenic environmental trail, ideal for jogging and walking.

Features

- Two Bedrooms
- Reception With Balcony
- Modern Kitchen
- En Suite Shower Room
- Bathroom
- Secure Parking

Parkgate Mews, London, N6



Main area: Approx. 72.5 sq. metres (780.0 sq. feet)
Plus balconies, approx. 3.3 sq. metres (35.6 sq. feet)