



## North Hill, N6

£2,200 Per calendar month

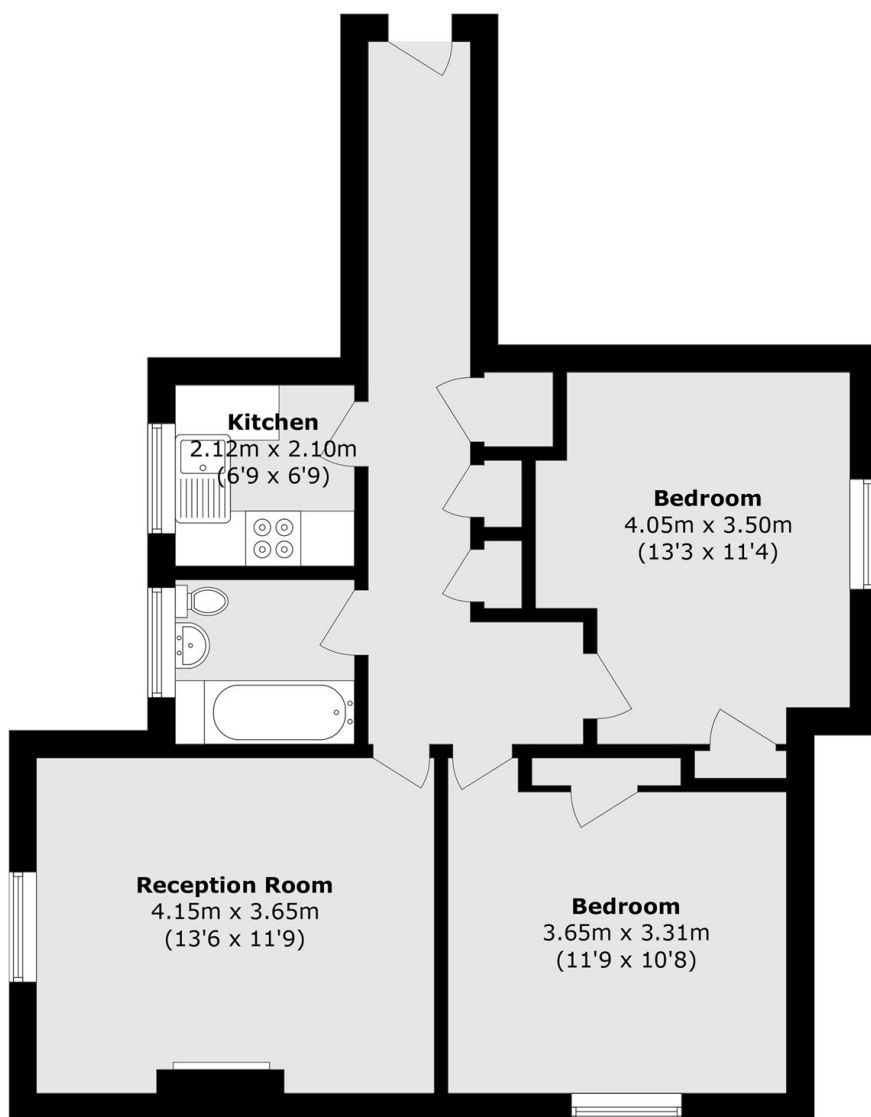
A spacious second floor apartment with two double bedrooms in this popular Art Deco style block. In the same ownership for a number of years, there is scope to add your own personal touch.

Convenient for Highgate Village, with Highgate underground is less than half a mile away. The green spaces of both Highgate Woods and Hampstead Heath are close by along with excellent local schools and numerous bus routes.

### Features

Two Bedrooms  
Reception Room  
Kitchen  
Lift Access  
Art Deco Building  
Second Floor

# North Hill, London, N6



Total area (approx.): 63.9 sq. m (687.8 sq. ft)