



Hornsey Lane, N6

£450,000

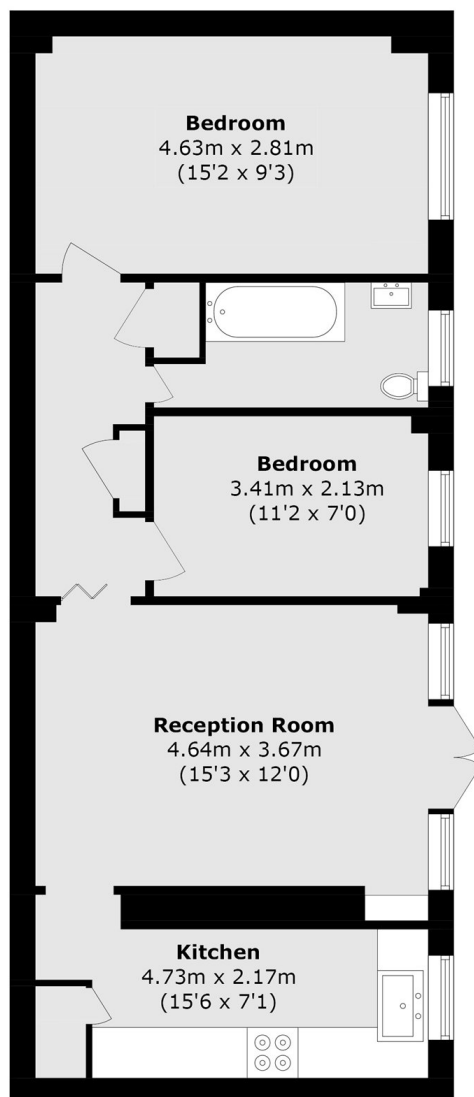
Available chain free, a generous third floor flat with a balcony in this sought after Art Deco block with extensive communal gardens, passenger lift, caretaker and permit parking.

Positioned at the upper end of Hornsey Lane and therefore close to the village, Waterlow Park and transport connections, the vibrant Broadway in Crouch End is at the far end of the road.

Features

- Two Bedrooms
- Reception Room
- Balcony
- Bathroom
- Kitchen
- Communal Gardens

Hornsey Lane, London, N6



Total area (approx.): 58.2 sq. m (626.4 sq. ft)