



Hornsey Lane, N6

£450,000

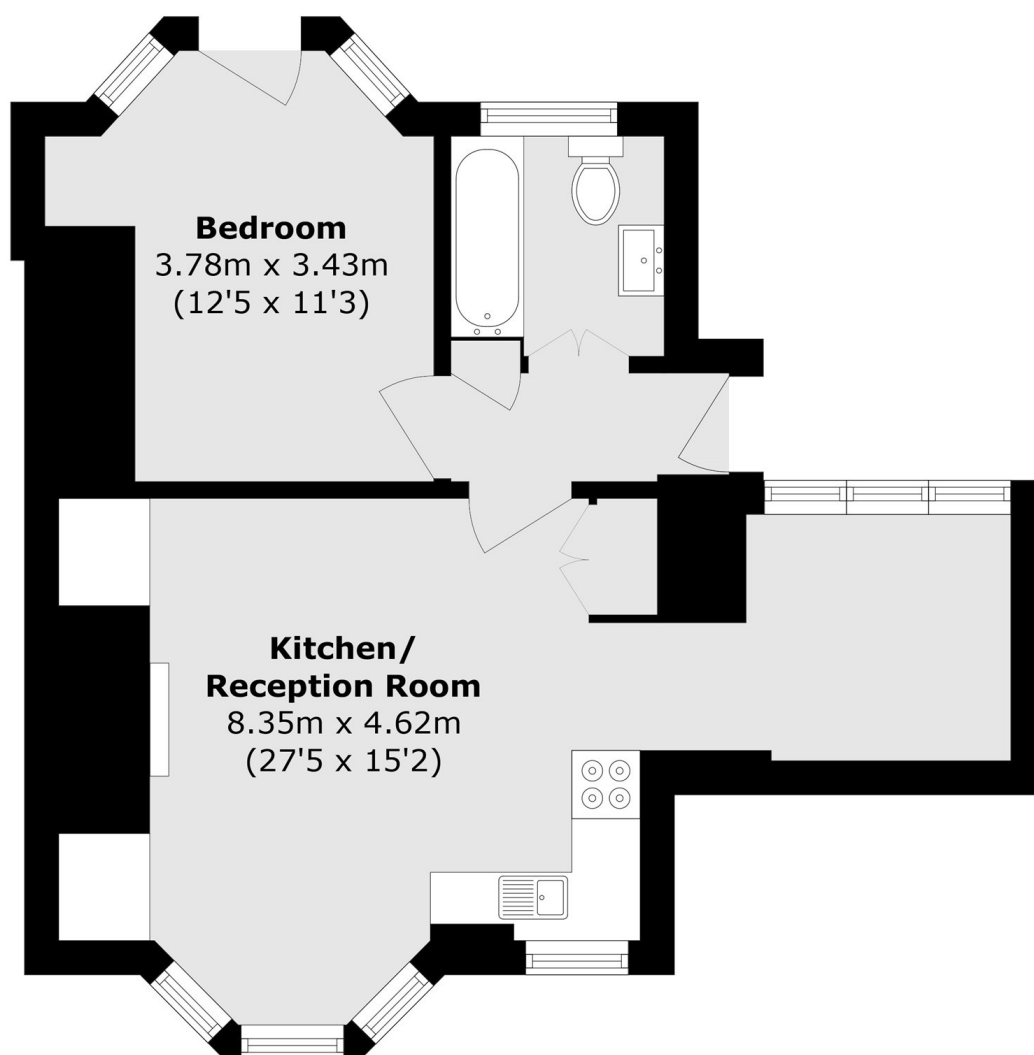
A stylishly refurbished ground floor apartment with direct access to a large communal garden.

Conveniently located for Highgate Village along with its local amenities of shops, cafés and restaurants and the green spaces of Waterlow Park. Archway underground station (Northern Line) is located half a mile away.

Features

- Ground Floor
- One Bedroom
- Open Plan Kitchen
- Reception Room
- Study/Dining Area
- Communal Gardens

Hornsey Lane, London, N6



Total area (approx.): 46.9 sq. m (504.8 sq. ft)