

Hazellville Road, N19

£300,000

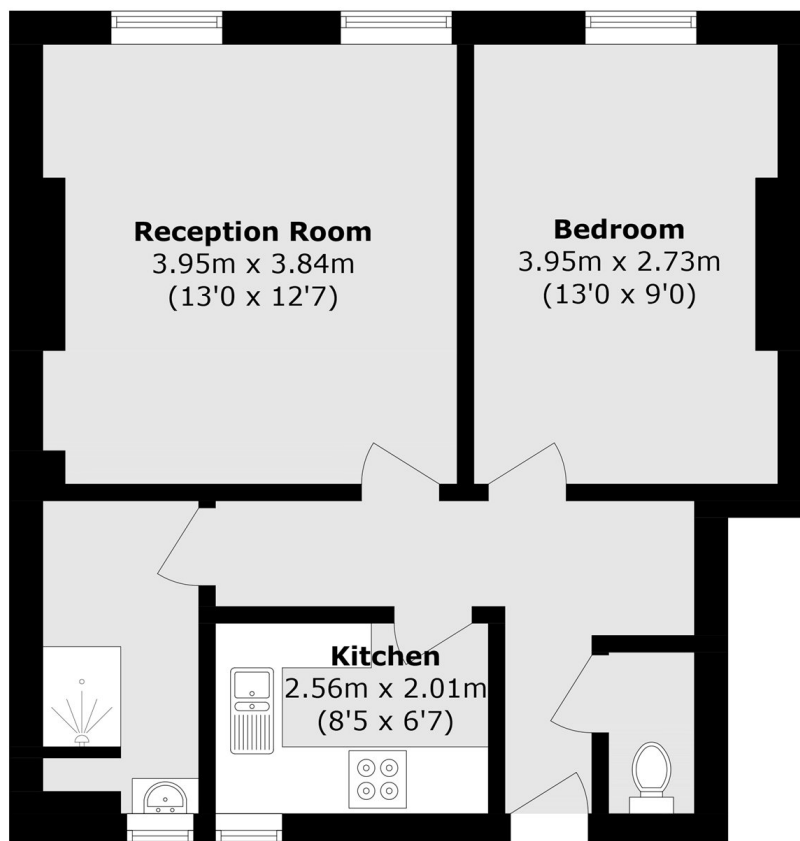
A first floor apartment in this popular and secure block. Requiring modernisation, this is an excellent opportunity for a first time buyer or rental investor.

Positioned midway along Hazellville Road and on the edge of the Whitehall Park conservation area, the property is close to Elthorne Park and just 0.6 of mile to Archway underground station.

Features

- Reception Room
- Double Bedroom
- Separate Kitchen
- Shower Room
- Communal Gardens
- Close To Transport

Hazellville Road, London, N19



Total area (approx.): 43.3 sq. m (466 sq. ft)