



## Centric Close, NW1

### £650,000

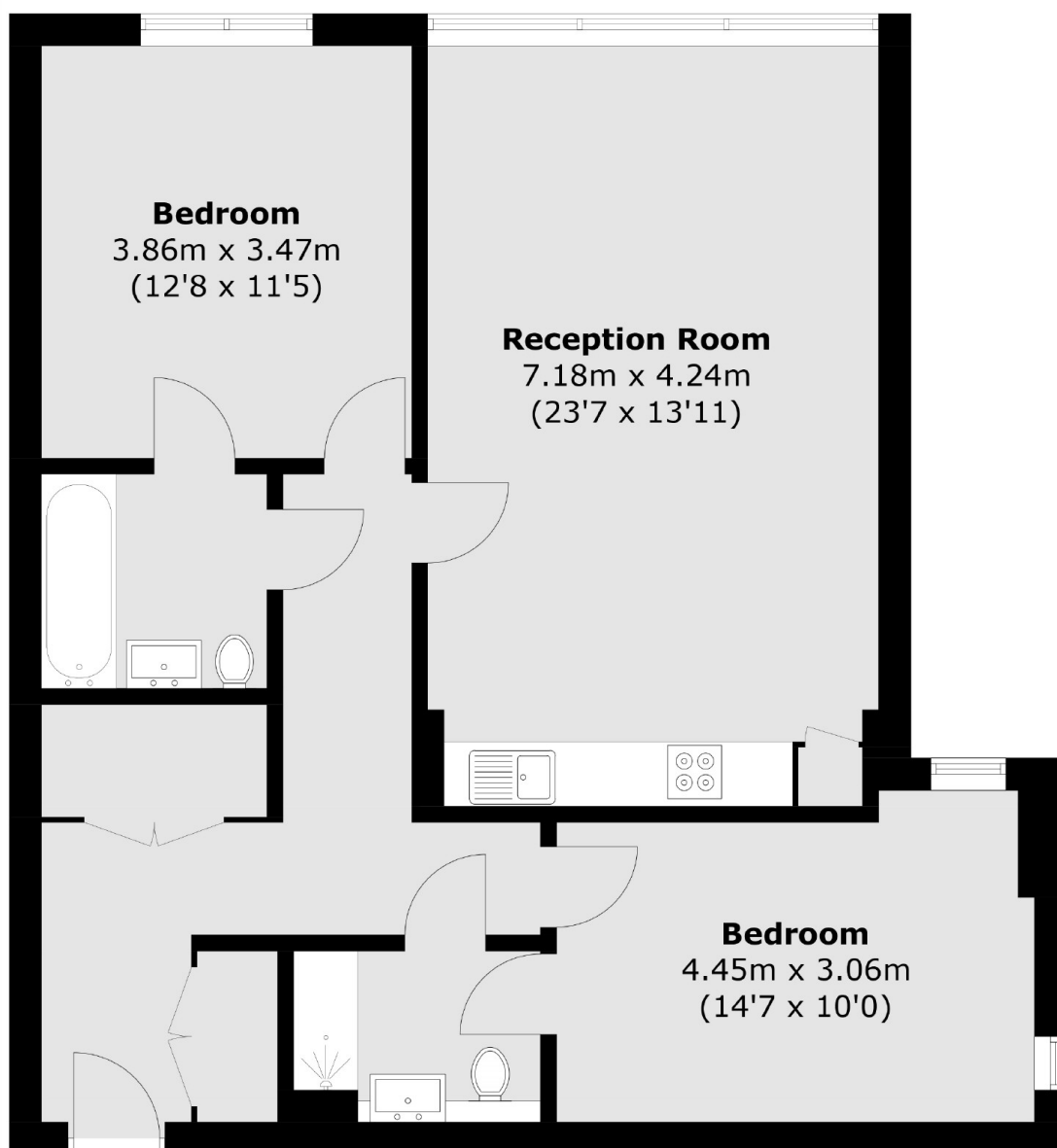
At approximately 893 sq.ft is this two double bedroom two bathroom new build apartment. The property has had only one owner and is very modern with the kitchen and bathroom finished to a high standard. This flat has a fantastic view and the building comes with a communal roof garden and lift access.

Centric Close is conveniently located 0.3 miles from Camden Town (Northern Line), 0.5 miles from Camden Road (London Overground) and 1.2 miles from Euston (Victoria, Northern and National Rail lines). The green open spaces of Regents Park are less than a 10 minute walk away.

### Features

- Two Double Bedroom
- Approximately 893 Sq.Ft
- Two Bathrooms
- Communal Roof Garden
- Long Lease
- Excellent Location

# Centric Close, London, NW1



Total area (approx.): 83.0 sq. m (893.4 sq. ft)

## Dexters

Kentish Town & Camden  
274 Kentish Town Road  
London  
NW5 2AA  
Sales  
020 7483 6390

Energy Rating: B. We aim to make our particulars both accurate and reliable. However they are not guaranteed; nor do they form part of an offer or contract. If you require clarification on any points then please contact us, especially if you're traveling some distance to view. Please note that appliances and heating systems have not been tested and therefore no warranties can be given as to their good working order.

 **RICS** | Regulated  
Estate Agent  
and Letting Agent

[dexters.co.uk](https://www.dexters.co.uk)