



## Lady Margaret Road, NW5

### £700,000

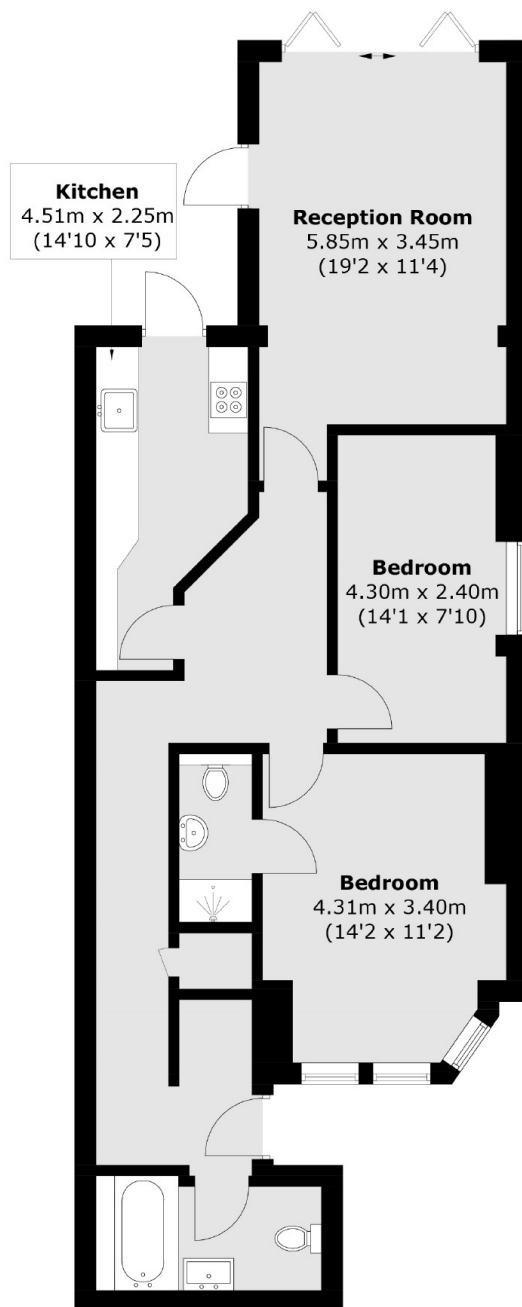
A beautiful two bedroom, two bathroom garden apartment on one of Kentish Town's most sought after roads. The apartment has its own private entrance, a large reception room with high ceilings and a large private garden.

Lady Margaret Road is in a key position with immediate access to Kentish Town tube (Northern line), the wonderful range of independent retailers on Fortress Road, and is still within reach of Hampstead Heath.

### Features

- Two Bedrooms
- Two Bathrooms
- Private Garden
- Share of Freehold
- Chain Free
- Private Entrance

# Lady Margaret Road, London, NW5



Total area (approx.): 79.3 sq. m (853.6 sq. ft)

## Dexters

Kentish Town & Camden  
274 Kentish Town Road  
London  
NW5 2AA  
Sales  
020 7483 6390

Energy Rating: D. We aim to make our particulars both accurate and reliable. However they are not guaranteed; nor do they form part of an offer or contract. If you require clarification on any points then please contact us, especially if you're traveling some distance to view. Please note that appliances and heating systems have not been tested and therefore no warranties can be given as to their good working order.

 **RICS** | Regulated  
Estate Agent  
and Letting Agent

[dexters.co.uk](https://www.dexters.co.uk)