



Delancey Street, NW1

£750 Per week

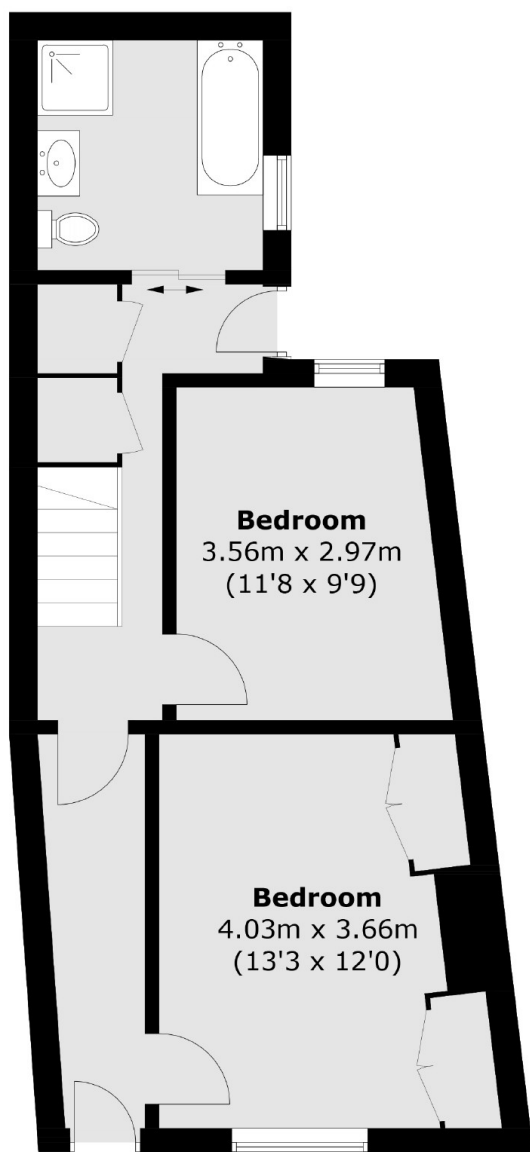
A stylish and immaculately presented two double bedroom duplex with a secluded garden close to Regents Park and the Northern line. This charming period conversion offers excellent space throughout with a double reception room, spacious kitchen, modern bathroom and excellent storage. Available Early February

Delancey Street is centrally located and has a wide array of local shops, cafe's and restaurants on its doorstep. Camden Town Underground and Overground are within a half a mile. The green spaces of Regents Park and popular boutique shops of Primrose Hill are also nearby.

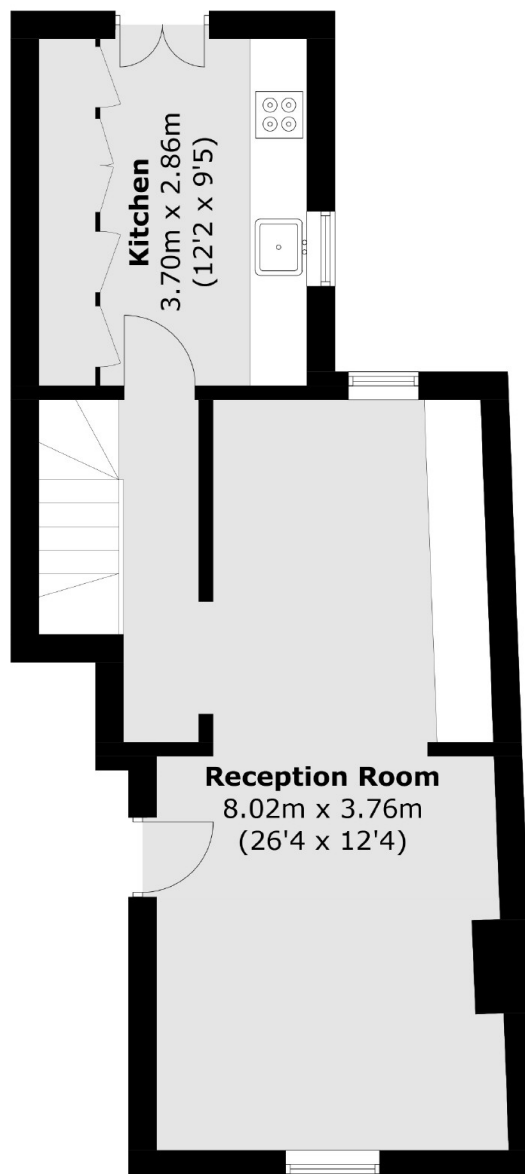
Features

- Two Double Bedrooms
- Living/Dining Room
- Large Private Garden
- Wood Floors
- High Ceilings
- Stylish Kitchen

Delancey Street,
London, NW1



Lower Ground Floor



Ground Floor

Total area (approx.): 87.4 sq. m (940.8 sq. ft)