



Caversham Road, NW5

£499,000

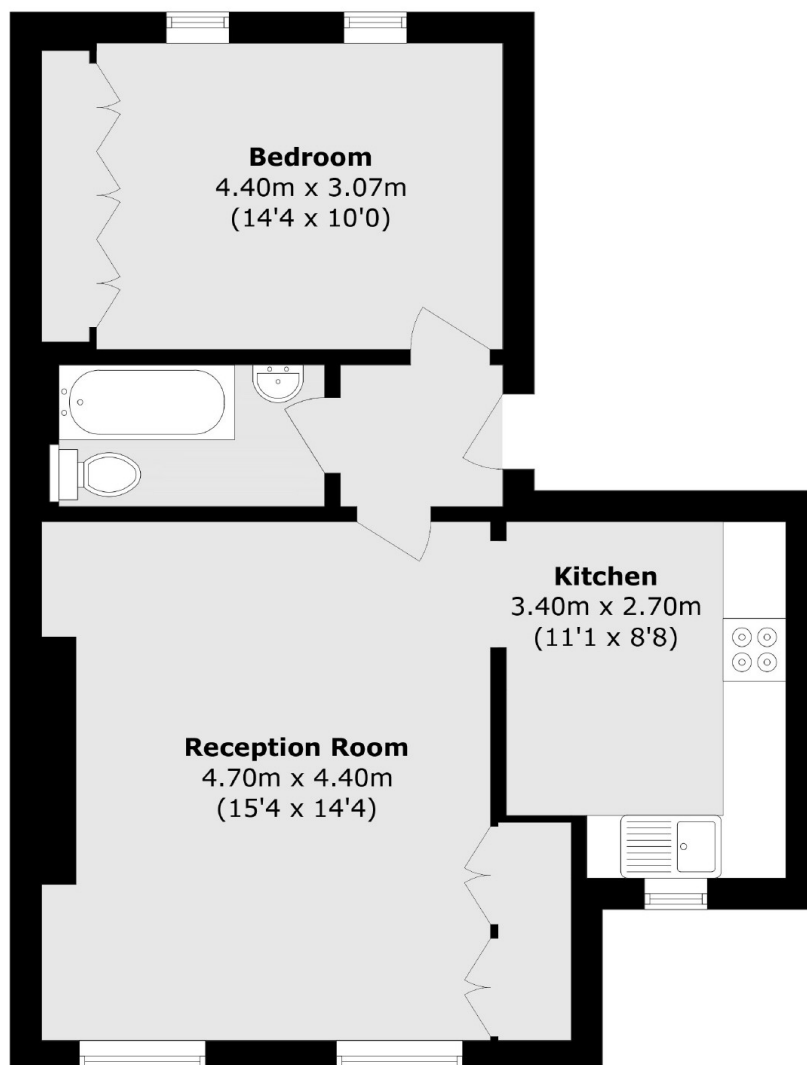
At approximately 560 sq.ft is this fantastic large one double bedroom apartment in great condition throughout. The apartment has large windows that let in lots of natural light and a separate, modern kitchen.

Centrally located on one of the area's most sought after roads. Excellent transport links can be found nearby at Kentish Town station (Northern line, Overground and Thameslink).

Features

- One Double Bedroom
- Great Condition
- Chain Free
- Leasehold
- Fantastic Location
- One Bathroom

Caversham Road, London, NW5



Total area (approx.): 52.1 sq. m (560.8 sq. ft)