



Dunollie Road, NW5

£1,000,000

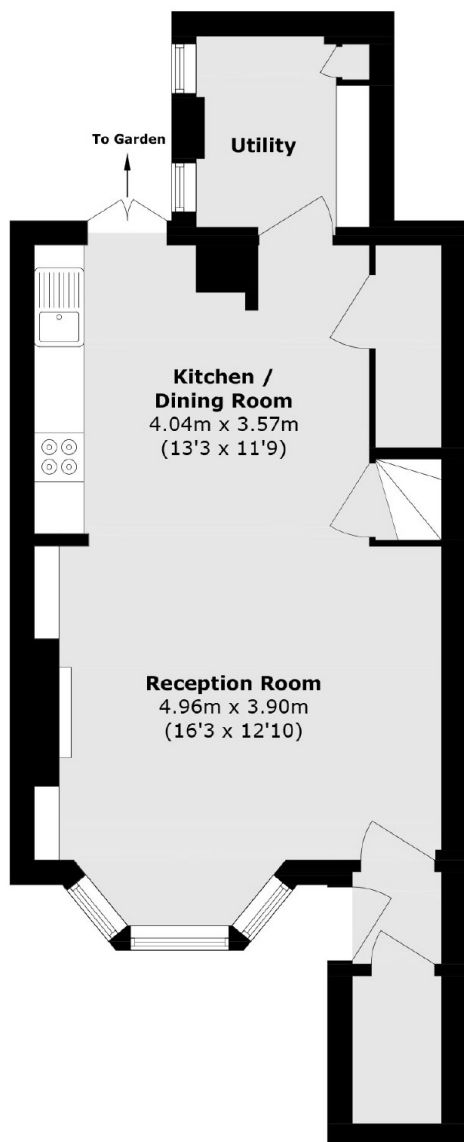
A well-presented split-level maisonette set over two floors of this mid terrace Victorian house. The property has two double bedrooms, a large living room and a modern fitted kitchen leading out onto a private garden.

Ideally located within this highly sought after residential enclave with good access to the many shops, pubs and restaurants of Tufnell Park and Kentish Town with excellent transport routes to the City, West End and St.Pancras International.

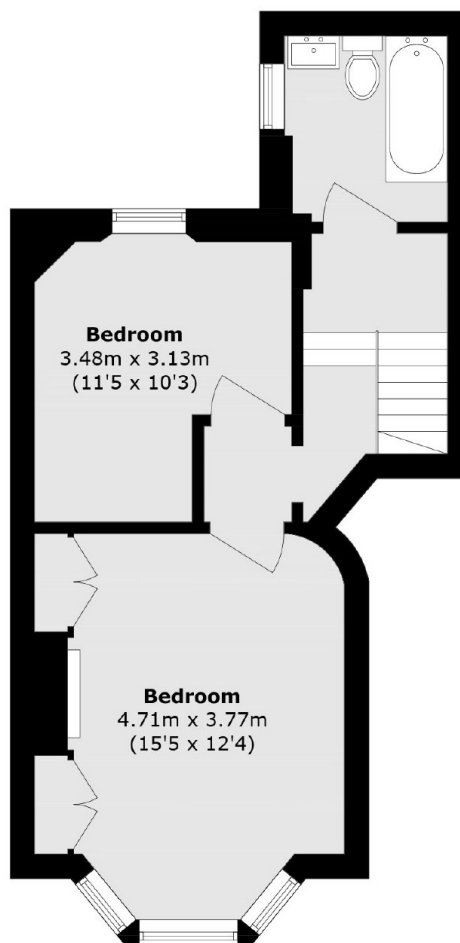
Features

- Two Bedrooms
- Share Of Freehold
- Private Entrance
- Private Garden
- Great Location
- Split-Level

Dunollie Road, London, NW5



Lower Ground Floor



Raised Ground Floor

Total area (approx.): 85.6 sq. m (921.3 sq. ft)